



2023

ATTACHMENT CATALOG



CONSTRUCTION
AGRICULTURE

EARTHMOVING
UTILITIES





READY FOR THE JOB

» WHAT YOU NEED, WHEN YOU NEED IT

Ziegler CAT has the largest attachment inventory in the Midwest with more than 6,000 Cat® and non-Cat attachments.

» RENTAL PURCHASE OPTIONS

Attachment rental and rent-to-own options can support your project needs for any duration — from a week to a year.

» READY FOR THE JOB

All of our attachments come with a one-year warranty after passing our standard pre-delivery inspection.

CONTENTS

Skid Steer Loaders	1
BUCKETS	1
FORKS	7
HAMMERS / BLADES	8
AUGERS	9
AGRICULTURE	10
LANDSCAPING	12
FORESTRY	14
GENERAL CONSTRUCTION / ROADWORK	15
Compact Wheel Loaders	19
BUCKETS	19
FORKS	20
Small to Large Wheel Loaders	21
Telehandlers	22
Mini Hydraulic Excavators	23
BUCKETS	23
GRAPPLES / COUPLERS	28
THUMBS	29
AUGERS	30
MULCHERS / COMPACTORS / HAMMERS	31
RIPPERS / SHEARS	32
Large Excavators	33
BUCKETS	33
COUPLERS / THUMBS / RIPPERS	36
HAMMERS / COMPACTION	37
MULCHERS / MULITI PROCESSORS	38
PINS	39
Backhoe Loaders	40



0% FOR 12 MONTHS OR 1.9% FOR 24 MONTHS.
ON ATTACHMENTS with the Cat Card





Cat General Purpose Bucket

General Purpose Buckets With BOCE

MODEL	62" GP	68" GP	74" GP	80" GP	86" GP	68" IP	74" IP	80" IP	86" IP	92" IP
Manufacturer	Caterpillar®	Caterpillar	Caterpillar	Caterpillar	Caterpillar	Caterpillar	Caterpillar	Caterpillar	Caterpillar	Caterpillar
Part Number	279-5365	279-5369	279-5373	279-5377	296-8192	532-7738	532-7741	532-7744	532-7747	532-7750
Width	62"	68"	74"	80"	86"	68"	74"	80"	86"	92"
Capacity	0.47 cu yd	0.53 cu yd	0.58 cu yd	0.63 cu yd	0.82 cu yd	0.69 cu yd	0.76 cu yd	0.82 cu yd	0.89 cu yd	0.95 cu yd
Weight	448 lbs	561 lbs	598 lbs	631 lbs	723 lbs	700 lbs	739 lbs	777 lbs	814 lbs	855 lbs
Height	16.8"	16.8"	16.8"	16.8"	18.5"	22.4"	22.4"	22.4"	22.4"	22.4"
Length	27.9"	27.9"	27.9"	27.9"	31.4"	40.2"	40.2"	40.2"	40.2"	40.2"
Ziegler Model	BKSSL62GP	BKSSL68GP	BKSSL74GP	BKSSL80GP	BKSSL86GP	BKSSL68IP	BKSSL74IP	BKSSL80IP	BKSSL86IP	BKSSL92IP



Virnig General Purpose Bucket

General Purpose Buckets With BOCE (cont.)

MODEL	60" GP	66" GP	72" GP	78" GP	84" GP	72" GP	78" GP	84" GP	90" GP	96" GP
Manufacturer	Virnig	Virnig	Virnig	Virnig	Virnig	Virnig	Virnig	Virnig	Virnig	Virnig
Width	61.5"	67.5"	73.5"	79.5"	85.5"	73.5"	79.5"	85.5"	91.5"	97.5"
Capacity	0.64 cu yd	0.71 cu yd	0.78 cu yd	0.85 cu yd	0.92 cu yd	0.85 cu yd	0.93 cu yd	1 cu yd	1.08 cu yd	1.16 cu yd
Weight	500 lbs	530 lbs	630 lbs	680 lbs	715 lbs	740 lbs	775 lbs	820 lbs	860 lbs	895 lbs
Height	24"	24"	24"	24"	24"	24.9"	24.9"	24.9"	24.9"	24.9"
Length	35.6"	35.6"	35.6"	35.6"	35.6"	37.6"	37.6"	37.6"	37.6"	37.6"
Ziegler Model	UHV60	UHV66	UHV72	UHV78	UHV84	HUHV72	HUHV78	HUHV84	HUHV90	HUHV96



Cat Low Profile Bucket

Low Profile Buckets With BOCE

MODEL	56" LP	62" LP	68" LP	74" LP	80" LP
Manufacturer	Caterpillar	Caterpillar	Caterpillar	Caterpillar	Caterpillar
Part Number	279-5435	279-5438	279-5441	285-6090	268-4083
Width	56"	62"	68"	74"	80"
Capacity	0.39 cu yd	0.44 cu yd	0.48 cu yd	0.54 cu yd	0.58 cu yd
Weight	392 lbs	452 lbs	512 lbs	547 lbs	584 lbs
Height	18.9"	18.9"	18.9"	18.9"	18.9"
Length	28.4"	28.4"	28.4"	28.4"	28.4"
Ziegler Model	BKSSL56LP	BKSSL62LP	BKSSL68LP	BKSSL74LP	BKSSL80LP



Virnig Low Profile Bucket

Low Profile Buckets With BOCE (cont.)

MODEL	60" LP	66" LP	72" LP	78" LP	84" LP	72" LP	78" LP	84" LP	90" LP
Manufacturer	Virnig	Virnig	Virnig	Virnig	Virnig	Virnig	Virnig	Virnig	Virnig
Width	61.5"	67.5"	73.5"	79.5"	85.5"	73.5"	79.5"	85.5"	97.5"
Capacity	0.53 cu yd	0.58 cu yd	0.64 cu yd	0.70 cu yd	0.75 cu yd	0.63 cu yd	0.69 cu yd	0.74 cu yd	0.85 cu yd
Weight	460 lbs	490 lbs	575 lbs	620 lbs	655 lbs	700 lbs	735 lbs	775 lbs	845 lbs
Height	20.5"	20.5"	20.5"	20.5"	20.5"	20.5"	20.5"	20.5"	20.5"
Length	34.6"	34.6"	34.6"	34.6"	34.6"	34.6"	34.6"	34.6"	34.6"
Ziegler Model	DHV60EX	DHV66EX	DHV72EX	DHV78EX	DHV84EX	HDHV72	HDHV78	HDHV84	HDHV90



Cat Multi-Purpose Bucket

Multi-Purpose Buckets				
MODEL	62" BOCE w/ SG	62" BOT w/ SG	68" BOCE w/ SG	68" BOT w/ SG
Manufacturer	Caterpillar	Caterpillar	Caterpillar	Caterpillar
Width	62"	62"	68"	68"
Cutting Edge Type	BOCE	Tooth	BOCE	Tooth
Capacity	0.39 cu yd	0.39 cu yd	0.44 cu yd	0.44 cu yd
Jaw Opening Width	30"	30"	30"	30"
Weight	851 lbs	818 lbs	906 lbs	868 lbs
Ziegler Model	BKSSL62MP	BKSSL62MP	BKSSL68MP	BKSSL68MP

Multi-Purpose Buckets (cont.)				
MODEL	74" BOCE w/ SG	74" BOT w/ SG	80" BOCE w/ SG	80" BOT w/ SG
Manufacturer	Caterpillar	Caterpillar	Caterpillar	Caterpillar
Width	74"	74"	80"	80"
Cutting Edge Type	BOCE	Tooth	BOCE	Tooth
Capacity	0.48 cu yd	0.48 cu yd	0.52 cu yd	0.52 cu yd
Jaw Opening Width	30"	30"	30"	30"
Weight	961 lbs	917 lbs	1,016 lbs	970 lbs
Ziegler Model	BKSSL74MP	BKSSL74MP	BKSSL80MP	BKSSL80MP

Multi-Purpose Buckets (cont.)		
MODEL	86" BOCE w/ SG	86" BOT w/ SG
Manufacturer	Caterpillar	Caterpillar
Width	86"	86"
Cutting Edge Type	BOCE	Tooth
Capacity	0.56 cu yd	0.56 cu yd
Jaw Opening Width	30"	30"
Weight	1,071 lbs	1,019 lbs
Ziegler Model	BKSSL86MP	BKSSL86MP



Cat Tooth Bucket

Tooth Buckets					
MODEL	BKSSL62TB	BKSSL68TB	BKSSL74TB	BKSSL80TB	BKSSL86TB
Manufacturer	Caterpillar	Caterpillar	Caterpillar	Caterpillar	Caterpillar
Part Number	279-5366	279-5370	279-5374	279-5378	296-8191
Width	62"	68"	74"	80"	86"
Capacity	0.47 cu yd	0.52 cu yd	0.58 cu yd	0.63 cu yd	0.82 cu yd
Weight	408 lbs	509 lbs	549 lbs	582 lbs	670 lbs
Height	16.8"	16.8"	16.8"	16.8"	18.5"
Length	27.9"	27.9"	27.9"	27.9"	31.4"
Ziegler Model	BKSSL62TB	BKSSL68TB	BKSSL74TB	BKSSL80TB	BKSSL86TB



Cat Light Material Bucket

Snow / Light Material Buckets With BOCE

MODEL	74" LIGHT MATERIAL	80" LIGHT MATERIAL	86" LIGHT MATERIAL	98" LIGHT MATERIAL	86" MATERIAL HANDLING	98" MATERIAL HANDLING	104" MATERIAL HANDLING	60" LIGHT MATERIAL	66" LIGHT MATERIAL
Manufacturer	Caterpillar	Caterpillar	Caterpillar	Caterpillar	Caterpillar	Caterpillar	Caterpillar	Virnig	Virnig
Width	74"	80"	86"	98"	86"	98"	104"	61.5"	67.5"
Capacity	0.90 cu yd	0.98 cu yd	1.1 cu yd	1.22 cu yd	1.4 cu yd	1.64 cu yd	1.74 cu yd	0.83 cu yd	0.91 cu yd
Weight	666 lbs	706 lbs	747 lbs	822 lbs	805 lbs	882 lbs	922 lbs	500 lbs	535 lbs
Height	27.4"	27.4"	27.4"	27.4"	29.8"	29.8"	29.8"	26.6"	26.6"
Length	32.6"	32.6"	32.6"	32.6"	40.6"	40.6"	40.6"	37.6"	37.6"
Ziegler Model	BKSSL74LM	BKSSL80LM	BKSSL86LM	BKSSL98LM	BKSSL86MH	BKSSL98MH	BKSSL104MH	SLHV60	SLHV66



Virnig Light Material Bucket

Snow / Light Material Buckets With BOCE (cont.)

MODEL	72" LIGHT MATERIAL	78" LIGHT MATERIAL	84" LIGHT MATERIAL	96" LIGHT MATERIAL	72" LIGHT MATERIAL	78" LIGHT MATERIAL	84" LIGHT MATERIAL	96" LIGHT MATERIAL	101" LIGHT MATERIAL
Manufacturer	Virnig	Virnig	Virnig	Virnig	Virnig	Virnig	Virnig	Virnig	Virnig
Width	73.5"	79.5"	85.5"	97.5"	73.5"	79.5"	85.5"	97.5"	101.5"
Capacity	0.99 cu yd	1.07 cu yd	1.15 cu yd	1.31 cu yd	1.18 cu yd	1.28 cu yd	1.38 cu yd	1.58 cu yd	1.65 cu yd
Weight	570 lbs	605 lbs	640 lbs	770 lbs	660 lbs	710 lbs	745 lbs	810 lbs	830 lbs
Height	26.6"	26.6"	26.6"	26.6"	29.8"	29.8"	29.8"	29.8"	29.8"
Length	37.6"	37.6"	37.6"	37.6"	40.6"	40.6"	40.6"	40.6"	40.6"
Ziegler Model	SLHV72	SLHV78	SLHV84	SLHV96	MSHV72	MSHV78	MSHV84	MSHV96	MSHV101

Snow / Light Material Buckets With BOCE (cont.)

MODEL	78" LIGHT MATERIAL	84" LIGHT MATERIAL	96" LIGHT MATERIAL	101" LIGHT MATERIAL
Manufacturer	Virnig	Virnig	Virnig	Virnig
Width	79.5"	85.5"	97.5"	101.5"
Capacity	1.79 cu yd	1.92 cu yd	2.2 cu yd	2.32 cu yd
Weight	950 lbs	1,030 lbs	1,180 lbs	1,250 lbs
Height	40.5"	40.5"	40.5"	40.5"
Length	45.5"	45.5"	45.5"	45.5"
Ziegler Model	SBHV78	SBHV84	SBHV96	SBHV101





Cat Mixing Bucket

Mixing Buckets

MODEL	MB200	MB250
Manufacturer	Caterpillar	Caterpillar
Required Hydraulic Flow	13 gpm	13 gpm
Width	63.1"	63.2"
Weight	639 lbs	948 lbs
Ziegler Model	MB200	MB250



Virnig High Dump Bucket

High Dump Buckets

MODEL	DMP60	DMP72	DMP84	DMP96
Manufacturer	Virnig	Virnig	Virnig	Virnig
Width	61.5"	73.5"	85.5"	97.5"
Bucket Depth	47.3"	47.3"	47.3"	47.3"
Capacity	27.4 cu ft	32.9 cu ft	38.4 cu ft	43.9 cu ft
Weight	1,015 lbs	1,115 lbs	1,215 lbs	1,310 lbs
Ziegler Model	DMP60	DMP72	DMP84	DMP96



CMP Hydra Bucket

Hydra Buckets

MODEL	HB60	HB66	HB72	HB78	HB84
Manufacturer	CMP	CMP	CMP	CMP	CMP
Width	60"	66"	72"	78"	84"
Bucket Depth	44"	44"	44"	44"	44"
Capacity	10.25 cu ft	11.25 cu ft	12.38 cu ft	13.8 cu ft	14.38 cu ft
Weight	790 lbs	850 lbs	895 lbs	940 lbs	995 lbs
Ziegler Model	BKSSL60HYDRA	BKSSL66HYDRA	BKSSL72HYDRA	BKSSL78HYDRA	BKSSL84HYDRA



Cat Utility Bucket

Utility Buckets

MODEL	UTILITY BUCKET 62"	UTILITY BUCKET 68"	UTILITY BUCKET 74"
Manufacturer	Caterpillar	Caterpillar	Caterpillar
Width	62"	68"	74"
Capacity	0.56 cu yd	0.63 cu yd	0.68 cu yd
Weight	529 lbs	569 lbs	609 lbs
Ziegler Model	BKSSL62UT	BKSSL68UT	BKSSL74UT



Cat Utility Grapple Bucket

Utility Grapple Buckets		
MODEL	UTILITY GRAPPLE 68"	UTILITY GRAPPLE 74"
Manufacturer	Caterpillar	Caterpillar
Width	68"	74"
Capacity	0.63 cu yd	0.68 cu yd
Grapple Jaw Opening Width	35.5"	35.5"
Weight	805 lbs	842 lbs
Ziegler Model	BKSSL68GB	BKSSL74GB



Cat Industrial Grapple Bucket

Industrial Grapple Buckets				
MODEL	INDUSTRIAL GRAPPLE 62"	INDUSTRIAL GRAPPLE 68"	INDUSTRIAL GRAPPLE 74"	INDUSTRIAL GRAPPLE 80"
Manufacturer	Caterpillar	Caterpillar	Caterpillar	Caterpillar
Width	62"	68"	74"	80"
Jaw Opening	40"	40"	40"	40"
Weight	1,063 lbs	1,111 lbs	1,160 lbs	1,202 lbs
Ziegler Model	BKSSL62GB	BKSSL68GB	BKSSL74GB	BKSSL80GB



Virnig Industrial Grapple Bucket

Industrial Grapple Buckets (cont.)								
MODEL	SBG60	SBG66	SBG72	SBG78	ISG72	ISG78	ISG84	ISG90
Manufacturer	Virnig	Virnig	Virnig	Virnig	Virnig	Virnig	Virnig	Virnig
Width	61.5"	67.5"	73.5"	79.5"	73.5"	79.5"	85.5"	91.5"
Jaw Opening	37.8"	37.8"	37.8"	37.8"	40"	40"	40"	40"
Weight	895 lbs	930 lbs	965 lbs	1,015 lbs	1,080 lbs	1,130 lbs	1,170 lbs	1,210 lbs
Ziegler Model	SBG60	SBG66	SBG72	SBG78	ISG72	ISG78	ISG84	ISG90



Virnig Skeleton Rock Bucket

Skeleton Rock Buckets						
MODEL	79" SB	87" SB	94" SB	SRV60	SRV66	SRV72
Manufacturer	Caterpillar	Caterpillar	Caterpillar	Virnig	Virnig	Virnig
Width	79"	87"	94"	61"	67.6"	74.3"
Bucket Depth				42.9"	42.9"	42.9"
Number of Tines	21	23	25	19	21	23
Space Between Tines	2.5"	2.5"	2.5"	2.9"	2.9"	2.9"
Weight	741 lbs	800 lbs	860 lbs	540 lbs	585 lbs	630 lbs
Ziegler Model	BKSSL79SB	BKSSL87SB	BKSSL94SB	SRV60	SRV66	SRV72

Skeleton Rock Buckets (cont.)						
MODEL	SRV78	SRV84	HSRV72	HSRV78	HSRV84	HSRV90
Manufacturer	Virnig	Virnig	Virnig	Virnig	Virnig	Virnig
Width	80.9"	87.5"	73.5"	79.5"	85.5"	91.5"
Bucket Depth	42.9"	42.9"	42.9"	42.9"	42.9"	42.9"
Number of Tines	25	27	17	18	20	21
Space Between Tines	2.9"	2.9"	4"	4.1"	3.9"	4"
Weight	675 lbs	720 lbs	675 lbs	710 lbs	765 lbs	800 lbs
Ziegler Model	SRV78	SRV84	HSRV72	HSRV78	HSRV84	HSRV90



Virnig Skeleton Rock Grapple Bucket

Skeleton Rock Grapple Buckets

MODEL	SRGV60	SRGV66	SRGV72	SRGV78	SRGV84	HSRGV72	HSRGV78	HSRGV84	HSRGV90
Manufacturer	Virnig	Virnig	Virnig	Virnig	Virnig	Virnig	Virnig	Virnig	Virnig
Width	61"	67.6"	74.3"	80.9"	87.5"	73.5"	79.5"	85.5"	91.5"
Bucket Depth	42.9"	42.9"	42.9"	42.9"	42.9"	42.9"	42.9"	42.9"	42.9"
Space Between Tines	2.9"	2.9"	2.9"	2.9"	2.9"	4"	4.1"	3.9"	4"
Jaw Opening	37"	37"	37"	37"	37"	37"	37"	37"	37"
Weight	940 lbs	990 lbs	1,035 lbs	1,080 lbs	1,125 lbs	1,080 lbs	1,115 lbs	1,170 lbs	1,205 lbs
Ziegler Model	SRGV60	SRGV66	SRGV72	SRGV78	SRGV84	HSRGV72	HSRGV78	HSRGV84	HSRGV90



Virnig Skeleton Tine Grapple Bucket

Skeleton Tine Grapple Buckets

MODEL	STG66	STG72	STG78	STG84	STG90
Manufacturer	Virnig	Virnig	Virnig	Virnig	Virnig
Width	68"	74"	80"	86"	92"
Bucket Depth	36.5"	36.5"	36.5"	36.5"	36.5"
Space Between Tines	9.5"	8.4"	8.7"	9.3"	8.5"
Jaw Opening	37.9"	37.9"	37.9"	37.9"	37.9"
Weight	910 lbs	950 lbs	990 lbs	1,010 lbs	1,050 lbs
Ziegler Model	STG66	STG72	STG78	STG84	STG90



Virnig Skeleton Grapple Bucket

Skeleton Grapple Buckets

MODEL	SGV60	SGV66	SGV72	SGV78	SGV84	SGV90
Manufacturer	Virnig	Virnig	Virnig	Virnig	Virnig	Virnig
Width	61.5"	67.5"	73.5"	79.5"	85.5"	91.5"
Bucket Depth	39.9"	39.9"	39.9"	39.9"	39.9"	39.9"
Space Between Tines	5.5"	5.5"	5.5"	5.5"	5.5"	5.5"
Jaw Opening	37.6"	37.6"	37.6"	37.6"	37.6"	37.6"
Weight	815 lbs	850 lbs	885 lbs	920 lbs	955 lbs	990 lbs
Ziegler Model	SGV60	SGV66	SGV72	SGV78	SGV84	SGV90



Virnig Large Capacity Skeleton Grapple Bucket

Large Capacity Skelton Grapple Buckets

MODEL	LCG72	LCG84
Manufacturer	Virnig	Virnig
Width	73"	85"
Bucket Depth	46"	46"
Space Between Tines	7.5"	7.1"
Jaw Opening	62.8"	62.8"
Weight	1,550 lbs	1,650 lbs
Ziegler Model	LCG72	LCG84



Cat Forks

Forks								
MODEL	FKSSL48	FKSSL48HD	FKSSL60HD	FKSSLNURSERY	FKSSL48	FKSSL60	FKSSL72	FKSSL48HYD
Manufacturer	Caterpillar	Caterpillar	Caterpillar	Caterpillar	Jenkins Iron & Steel	Jenkins Iron & Steel	Jenkins Iron & Steel	Jenkins Iron & Steel
Part Number	353-1697	532-7810	532-7810	604-9820	N/A	N/A	N/A	N/A
Carriage Width	46"	57"	57"	52"	48"	48"	48"	48"
Fork Length	48"	48"	60"	70"	48"	60"	72"	48"
Walk-Through	No	Yes	Yes	No	Yes	Yes	Yes	No
Weight	435 lbs	612 lbs	668 lbs	798 lbs	442 lbs	462 lbs	480 lbs	612 lbs
Ziegler Model	FKSSL48	FKSSL48HD	FKSSL60HD	FKSSLNURSERY	FKSSL48	FKSSL60	FKSSL72	FKSSL48HYD



Virnig Forks

Forks (cont.)						
MODEL	WPFWT4255	WPFWT4855	PFHG4255	PFHG4855	WPFHG4862	WPFHG6055
Manufacturer	Virnig	Virnig	Virnig	Virnig	Virnig	Virnig
Carriage Width	54.5"	54.5"	45.5"	45.5"	54.5"	54.5"
Fork Length	42"	48"	42"	48"	48"	60"
Walk-Through	Yes	Yes	No	No	No	No
Weight	420 lbs	435 lbs	365 lbs	380 lbs	435 lbs	455 lbs
Ziegler Model	FKSSL42	FKSSL48	FKSSL42	FKSSL48	FKSSL48	FKSSL60



Cat Utility Fork Grapple

Utility Fork Grapples						
MODEL	INDUSTRIAL GRAPPLE FORK 66"	INDUSTRIAL GRAPPLE FORK 72"	MGV160	MGV166	MGV172	MGV178
Manufacturer	Caterpillar	Caterpillar	Virnig	Virnig	Virnig	Virnig
Width	66"	72"	61.3"	67.3"	73.3"	79.3"
Bucket Depth	36.5"	36.5"	33.5"	33.5"	33.5"	33.5"
Number of Tines	9	11	9	10	11	12
Space Between Tines	8.3"	7.2"	5.4"	5.3"	5.2"	5.1"
Jaw Opening	38"	38"	38"	38"	38"	38"
Weight	1,107 lbs	1,208 lbs	835 lbs	860 lbs	950 lbs	990 lbs
Ziegler Model	BKSSL66GF	BKSSL72GF	MGV160	MGV166	MGV172	MGV178



Virnig Utility Fork Grapple

Utility Fork Grapples (cont.)								
MODEL	TBG260	TBG266	TBG272	TBG278	ITG72	ITG78	ITG84	ITG90
Manufacturer	Virnig	Virnig	Virnig	Virnig	Virnig	Virnig	Virnig	Virnig
Width	61.3"	67.3"	73.3"	79.3"	73.3"	79.3"	85.3"	91.3"
Bucket Depth	37"	37"	37"	37"	37"	37"	37"	37"
Number of Tines	9	10	11	12	11	12	13	13
Space Between Tines	5.1"	5"	4.9"	4.8"	4.6"	4.5"	4.4"	4.9"
Jaw Opening	39.5"	39.5"	39.5"	39.5"	41.3"	41.3"	41.3"	41.3"
Weight	1,040 lbs	1,110 lbs	1,180 lbs	1,250 lbs	1,325 lbs	1,400 lbs	1,470 lbs	1,495 lbs
Ziegler Model	TBG260	TBG266	TBG272	TBG278	ITG72	ITG78	ITG84	ITG90



Cat Hammer

Hammers					
MODEL	H55S	H65S	B4	B4S	B6
Manufacturer	Caterpillar	Caterpillar	Caterpillar	Caterpillar	Caterpillar
Max. Hydraulic Flow Rate	22 gpm	30 gpm	13 gpm	13 gpm	18.5 gpm
Blows Per Minute	600 – 1,680	720 – 1,720	600 – 1,100	600 – 1,100	500 – 900
Energy Class	600 ft-lbf	800 ft-lbf	273 ft-lbf	273 ft-lbf	502 ft-lbf
Ziegler Model	H55S	H65S	B4	B4S	B6

Hammers (cont.)				
MODEL	B6S	B8	B8S	HD3700
Manufacturer	Caterpillar	Caterpillar	Caterpillar	Hurricane
Max. Hydraulic Flow Rate	18.5 gpm	23 gpm	23 gpm	8 gpm
Blows Per Minute	500 – 900	400 – 800	400 – 800	30
Energy Class	502 ft-lbf	848 ft-lbf	848 ft-lbf	1,540 ft-lbf
Ziegler Model	B6S	B8	B8S	HD3700



Cat Dozer Blade

Dozer Blades			
MODEL	DOZER BLADE 79"	DOZER BLADE 92"	SMART DOZER BLADE 92"
Manufacturer	Caterpillar	Caterpillar	Caterpillar
Required Hydraulic Flow	11 – 23 gpm	11 – 23 gpm	11 – 23 gpm
Width	79"	92"	92"
Weight	1,082 lbs	1,164 lbs	1,164 lbs
Ziegler Model	BLADESSL79	BLADESSL92	BLADESSL92SMART



Virnig U-Blade

U-Blades			
MODEL	UBV26	UBV30	UBV36
Manufacturer	Virnig	Virnig	Virnig
Inside Blade Diameter	26"	30"	36"
Approximate Digging Depth	48"	48"	48"
Weight	370 lbs	390 lbs	390 lbs
Ziegler Model	UBV26	UBV30	UBV36



Cat Auger Drive

Auger Drives Various Bit Sizes Available

MODEL	A23 (A14B)	A41 (A19B)	A68 (A26B)
Manufacturer	Caterpillar	Caterpillar	Caterpillar
Drive	Direct	Single Planetary	Double Planetary
Required Hydraulics	11 – 22 gpm	11 – 22 gpm	25.1 – 34.3 gpm
Weight	423 lbs	366 lbs	401 lbs
Ziegler Model	A23 SSL (A14B)	A41 SSL (A19B)	A68 SSL (A26B)



Cat Auger Bit

Standard Auger Bits

MODEL	STANDARD BIT 6"	STANDARD BIT 9"	STANDARD BIT 12"	STANDARD BIT 15"	STANDARD BIT 18"	STANDARD BIT 24"	STANDARD BIT 30"	STANDARD BIT 36"
Manufacturer	Caterpillar	Caterpillar	Caterpillar	Caterpillar	Caterpillar	Caterpillar	Caterpillar	Caterpillar
Part Number	153-4083	153-4084	153-4085	366-7752	153-4086	153-4089	217-3194	153-4091
Bit Diameter	6"	9"	12"	15"	18"	24"	30"	36"
Bit Type	Standard Duty	Standard Duty	Standard Duty	Standard Duty	Standard Duty	Standard Duty	Standard Duty	Standard Duty
Weight	51 lbs	75 lbs	101 lbs	111 lbs	143 lbs	203 lbs	282 lbs	381 lbs
Ziegler Model	AUGERBIT6	AUGERBIT9	AUGERBIT12	AUGERBIT15	AUGERBIT18	AUGERBIT24	AUGERBIT30	AUGERBIT36

Industrial / Tree Auger Bits

MODEL	INDUSTRIAL BIT 6"	INDUSTRIAL BIT 9"	INDUSTRIAL BIT 12"	INDUSTRIAL BIT 16"	INDUSTRIAL BIT 18"	INDUSTRIAL BIT 24"	TREE BIT 24"	TREE BIT 36"
Manufacturer	Caterpillar	Caterpillar	Caterpillar	Caterpillar	Caterpillar	Caterpillar	Caterpillar	Caterpillar
Part Number	372-0260	372-0261	372-0262	372-0263	372-0264	372-0265	153-4092	153-4095
Bit Diameter	6"	9"	12"	16"	18"	24"	24" / 12"	36" / 18"
Bit Type	Industrial Duty	Industrial Duty	Industrial Duty	Industrial Duty	Industrial Duty	Industrial Duty	Tree Bit	Tree Bit
Weight	57 lbs	72 lbs	91 lbs	114 lbs	107 lbs	150 lbs	163 lbs	309 lbs
Ziegler Model	AUGERBIT6I	AUGERBIT9I	AUGERBIT12I	AUGERBIT16I	AUGERBIT18I	AUGERBIT24I	AUGERBIT24I	AUGERBIT36I

Auger Adaptors / Extensions

MODEL	HEX TO ROUND ADAPTOR	ROUND TO HEX ADAPTOR	12" AUGER EXTENSION	24" AUGER EXTENSION	3' TELESCOPING EXTENSION	6' TELESCOPING EXTENSION
Manufacturer	Caterpillar	Caterpillar	Caterpillar	Caterpillar	Caterpillar	Caterpillar
Part Number	156-6329	217-3191	156-6328	217-3192	372-0256	372-0257
Weight	15 lbs	15 lbs	20 lbs	33 lbs	43 lbs	77 lbs
Ziegler Model	AUGERADAPT	AUGERADAPT	AUGEREXT12	AUGEREXT24	AUGTELEXT3	AUGTELEXT6



Cat Bale Spear

Bale Spears				
MODEL	BALE SPEAR DUAL 39"	BALE SPEAR DUAL 49"	BALE SPEAR SINGLE 39"	BALE SPEAR SINGLE 49"
Manufacturer	Caterpillar	Caterpillar	Caterpillar	Caterpillar
Main Tine Length	35"	45"	35"	45"
Capacity	3,000 lbs	3,000 lbs	2,000 lbs	2,000 lbs
Weight	260 lbs	267 lbs	154 lbs	159 lbs
Ziegler Model	BALESPSSL	BALESPSSL	BALESPSSL	BALESPSSL



Virnig Bale Spear

Bale Spears (cont.)										
MODEL	BSV48	BFV48	CBV48	SSV48	BASS66	BSV48F	BFV48F	CBV48F	SSV48F	BASS66F
Manufacturer	Virnig	Virnig	Virnig	Virnig	Virnig	Virnig	Virnig	Virnig	Virnig	Virnig
Main Tine Length	42.3"	42.3"	37.8"	25.8"	37.8"	43.4"	43.4"	43.4"	26.6"	26.6"
Capacity	2,000 lbs	2,000 lbs	2,000 lbs	2,000 lbs	2,000 lbs	2,000 lbs	2,000 lbs	2,000 lbs	2,000 lbs	2,000 lbs
Weight	230 lbs	270 lbs	260 lbs	225 lbs	310 lbs	210 lbs	235 lbs	235 lbs	205 lbs	260 lbs
Ziegler Model	BSV48	BFV48	CBV48	SSV48	BASS66	BSV48F	BFV48F	CBV48F	SSV48F	BASS66F



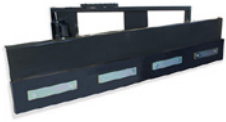
Cat Bale Grab

Bale Grabs		
MODEL	BALE GRAB 71"	BALE GRAB 84"
Manufacturer	Caterpillar	Caterpillar
Capacity	2,400 lbs	2,400 lbs
Max. Opening Width	71"	84"
Internal Width Arms Closed	37"	36.1"
Weight	574 lbs	579 lbs
Ziegler Model	BALEHUGSSL	BALEHUGSSL



Virnig Manure Slurry Bucket

Manure Slurry Buckets				
MODEL	MSB66	MSB72	MSB78	MSB84
Manufacturer	Virnig	Virnig	Virnig	Virnig
Width	68.3"	74.3"	80.3"	86.3"
Bucket Depth	37"	37"	37"	37"
Capacity	20.3 cu ft	22.1 cu ft	24 cu ft	25.8 cu ft
Weight	600 lbs	710 lbs	770 lbs	810 lbs
Ziegler Model	MSB66	MSB72	MSB78	MSB84



Virnig Feed Pusher

Feed Pusher

MODEL	FPV
Manufacturer	Virnig
Min. Push Width	30.1"
Max. Push Width	75.2"
Blade Height	20"
Blade Length	96"
Weight	520 lbs
Ziegler Model	FPV



Dymax Bunk Sweeper

Bunk Sweeper

MODEL	FEED BUNK SWEEPER
Manufacturer	Dymax
Required Hydraulic Flow	10 gpm
Broom Diameter	36"
Weight	630 lbs
Ziegler Model	BUNKSWEEP





Cat Brush Cutter

Brush Cutters

MODEL	BR115 (BR160)	BR117 (BR166)	BR118 (BR172)	BR120	BR318
Manufacturer	Caterpillar	Caterpillar	Caterpillar	Caterpillar	Caterpillar
Required Hydraulic Flow	15 – 17 gpm	15 – 21 gpm	15 – 21 gpm	15 – 21 gpm	20 – 34 gpm
Working Width	60"	66"	72"	78"	72"
Weight	950 lbs	1,050 lbs	1,100 lbs	1,162 lbs	1,106 lbs
Ziegler Model	BR115 (BR160)	BR117 (BR166)	BR118 (BR172)	BR120	BR318

Brush Cutters (cont.)

MODEL	BR320 (BR378)	BRX118	BRX318	BRX418
Manufacturer	Caterpillar	Caterpillar	Caterpillar	Caterpillar
Required Hydraulic Flow	20 – 34 gpm	20 – 23 gpm	31 – 33 gpm	40 – 41 gpm
Working Width	78"	72"	72"	72"
Weight	1,180 lbs	2,380 lbs	2,380 lbs	2,380 lbs
Ziegler Model	BR320 (BR378)	BRX118	BRX318	BRX418



Virnig Brush Cutter

Brush Cutters (cont.)

MODEL	RBV60-F	RBV60-HF33	RBV66-F	RBV66-HF33	RBV72-F	RBV72-HF33
Manufacturer	Virnig	Virnig	Virnig	Virnig	Virnig	Virnig
Required Hydraulic Flow	18 – 25 gpm	25 – 33 gpm	18 – 25 gpm	25 – 33 gpm	18 – 25 gpm	25 – 33 gpm
Required Flow	Standard or High	High	Standard or High	High	Standard or High	High
Working Width	60"	60"	66"	66"	72"	72"
Weight	1,598 lbs	1,598 lbs	1,740 lbs	1,740 lbs	1,872 lbs	1,872 lbs
Ziegler Model	RBV60	RBV60	RBV66	RBV66	RBV72	RBV72

Brush Cutters (cont.)

MODEL	RBV78-F	RBV78-HF33	IRC72-HF32	IRC72-HF39	IRC78-HF32	IRC78-HF39
Manufacturer	Virnig	Virnig	Virnig	Virnig	Virnig	Virnig
Required Hydraulic Flow	18 – 25 gpm	25 – 33 gpm	20 – 27 gpm	25 – 33 gpm	20 – 27 gpm	25 – 33 gpm
Required Flow	Standard or High	High	Standard or High	High	Standard or High	High
Working Width	78"	78"	72"	72"	78"	78"
Weight	1,964 lbs	1,964 lbs	2,120 lbs	2,120 lbs	2,280 lbs	2,280 lbs
Ziegler Model	RBV78	RBV78	IRC72	IRC72	IRC78	IRC78



Cat Mulcher

Mulchers

MODEL	HM112C	HM115C	HM215C	HM315C	HM415C	HM418C
Manufacturer	Caterpillar	Caterpillar	Caterpillar	Caterpillar	Caterpillar	Caterpillar
Required Hydraulic Flow	16 – 18 gpm	20 – 23 gpm	25 – 31 gpm	31 – 33 gpm	36 – 41 gpm	40 – 41 gpm
Working Width	49"	58"	58"	62"	58.6"	67.2"
Weight	1,682 lbs	1,803 lbs	1,803 lbs	2,959 lbs	2,959 lbs	3,197 lbs
Ziegler Model	HM112C	HM115C	HM215C	HM315C	HM415C	HM418C



Cat Landscape Rake

Landscape Rakes		
MODEL	LR116 (LR15B)	LR119 (LR18B)
Manufacturer	Caterpillar	Caterpillar
Required Hydraulic Flow	11 – 23 gpm	11 – 23 gpm
Working Width	62"	74"
Weight	1,312 lbs	1,440 lbs
Ziegler Model	LR116 (LR15B)	LR119 (LR18B)



Cat Power Box Rake

Power Box Rakes (Manual / Hydraulic Angle Optional — Hydraulic Specs Shown)			
MODEL	PR118 (PR172)	PR121 (PR184)	PR123 (PR190)
Manufacturer	Caterpillar	Caterpillar	Caterpillar
Required Hydraulic Flow	13 – 23 gpm	15 – 23 gpm	15 – 23 gpm
Working Width	72"	84"	90"
Weight	925 lbs	1,050 lbs	1,320 lbs
Ziegler Model	PR172	PR184	PR190



Cat Grapple Rake

Grapple Rakes				
MODEL	GRAPPLE RAKE 72"	GRAPPLE RAKE 84"	RRG72	RRG84
Manufacturer	Caterpillar	Caterpillar	Virnig	Virnig
Width	72"	84"	72"	84"
Space Between Tines	8"	8.4"	9.8"	9.8"
Jaw Opening	37"	37"	50.3"	50.3"
Weight	1,070 lbs	1,115 lbs	1,175 lbs	1,315 lbs
Ziegler Model	RAKESL72G	RAKESL84G	RRG72	RRG84



Cat Stump Grinder

Stump Grinders		
MODEL	SG16 (SG16B)	SG36 (SG18B)
Manufacturer	Caterpillar	Caterpillar
Required Hydraulic Flow	11 – 23 gpm	25 – 33 gpm
Weight	775 lbs	840 lbs
Ziegler Model	SG16 (SG16B)	SG36 (SG18B)



Cat Stump Bucket

Stump Buckets			
MODEL	60" STUMP BUCKET	STMP	STMPG (GRAPPLE)
Manufacturer	Caterpillar	Virnig	Virnig
Shovel Width – Bottom	12"	16"	16"
Shovel Width – Top		23.8"	23.8"
Shovel Depth With Teeth	59"	37.3"	37.3"
Weight	357 lbs	375 lbs	590 lbs
Ziegler Model	BKSTUMP60	STMP	STMPG (Grapple)



Dymax Tree Shear

Tree Shears

MODEL	14" TIMBERWOLF WITH ACCUMULATOR
Manufacturer	Dymax
Cutting Diameter	14"
Weight	2,250 lbs
Ziegler Model	TREESHEAR



Jenkins Iron & Steel Tree Puller

Tree Pullers

MODEL	TREE PULLER	TRP
Manufacturer	Jenkins Iron & Steel	Virnig
Jaw Opening	17.5"	11.5"
Weight	400 lbs	462 lbs
Ziegler Model	TREEPULLER	TRP



Dutchman Tree Spade

Tree Spades

MODEL	420I
Manufacturer	Dutchman
Rootball Diameter	34" – 42"
Weight	2,100 lbs
Ziegler Model	TREESPAD42



Cat Tiller

Tillers

MODEL	LT114 (LT13B)	LT118 (LT18B)
Manufacturer	Caterpillar	Caterpillar
Required Hydraulic Flow	11 – 23 gpm	16 – 30 gpm
Working Width	53"	73"
Weight	926 lbs	926 lbs
Ziegler Model	LT114 (LT13B)	LT118 (LT18B)



SS Eco Forestry Head

Forestry Heads

MODEL	SS ECO	DTM60
Manufacturer	Advanced Forestry	Virnig
Required Hydraulic Flow	32 – 45 gpm	30 – 45 gpm
Weight	2,535 lbs	2,710 lbs
Ziegler Model	MULCH60SSL	MULCH60SSL



Cat Backhoe

Backhoe Attachments

MODEL	BH130, SMART
Manufacturer	Caterpillar
Required Hydraulic Flow	13 – 23 gpm
Max. Dig Depth	117"
Weight	2,326 lbs
Ziegler Model	BH130



Cat Broom

Brooms

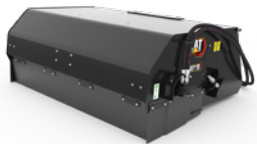
MODEL	BA118C	BA118C	VAB60	VAB72	VAB84	VAB96
Manufacturer	Caterpillar	Caterpillar	Virnig	Virnig	Virnig	Virnig
Required Hydraulic Flow	11 – 23 gpm	11 – 23 gpm	15 – 25 gpm	15 – 25 gpm	15 – 25 gpm	15 – 25 gpm
Working Width	83"	83"	60"	72"	84"	96"
Weight	905 lbs	955 lbs	970 lbs	1,035 lbs	1,095 lbs	1,160 lbs
Manual or Hydraulic Angle	Manual	Hydraulic	Hydraulic	Hydraulic	Hydraulic	Hydraulic
Ziegler Model	BA118C	BA118C	VAB60	VAB72	VAB84	VAB96



Cat Pickup Broom

Pickup Brooms

MODEL	BP115C	BP118C	PUB60	PUB72	PUB84
Manufacturer	Caterpillar	Caterpillar	Virnig	Virnig	Virnig
Required Hydraulic Flow	11 – 23 gpm	11 – 23 gpm	15 – 25 gpm	15 – 25 gpm	15 – 25 gpm
Overall Width	78"	90"	67.8"	79.8"	91.8"
Sweeping Width	60"	72"	60"	72"	84"
Weight	1,160 lbs	1,258 lbs	990 lbs	1,120 lbs	1,250 lbs
Ziegler Model	BP115C	BP118C	PUB60	PUB72	PUB84



Cat Utility Broom

Utility Brooms

MODEL	BU115	BU118
Manufacturer	Caterpillar	Caterpillar
Required Hydraulic Flow	8 – 22 gpm	8 – 22 gpm
Overall Width	71"	83"
Sweeping Width	59"	73"
Weight	947 lbs	1,035 lbs
Ziegler Model	BU115	BU118



Cat Cold Planer

Cold Planers

MODEL	PC104	PC105	PC305	PC306	PC408	PC310	PC412
Manufacturer	Caterpillar	Caterpillar	Caterpillar	Caterpillar	Caterpillar	Caterpillar	Caterpillar
Required Hydraulic Flow	16 – 21 gpm	21 – 30 gpm	26 – 33 gpm	26 – 33 gpm	36 – 40 gpm	26 – 33 gpm	36 – 40 gpm
Working Width	14"	18"	18"	24"	30"	39"	47"
Weight	1,474 lbs	1,630 lbs	1,896 lbs	2,061 lbs	2,315 lbs	2,130 lbs	2,580 lbs
Ziegler Model	PC104	PC105	PC305	PC306	PC408	PC310	PC412



Cat Compactor

Compactors

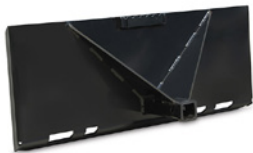
MODEL	CV117 (CV16B)	CV119 (CV18B)
Manufacturer	Caterpillar	Caterpillar
Required Hydraulic Flow	11 – 23 gpm	11 – 23 gpm
Working Width	66"	73"
Weight	2,063 lbs	2,138 lbs
Ziegler Model	CV117 (CV16B)	CV119 (CV18B)



Cat Grading Blade

Grading Blades

MODEL	GB120 WITH WINGS	GB124 WITH WINGS	BB121	BB124
Manufacturer	Caterpillar	Caterpillar	Caterpillar	Caterpillar
Working Width	78"	96"	84"	96"
Dual Mast Spectra Laser Receivers	No	No	No	No
Trimble® Controller	No	No	No	No
Weight	1,970 lbs	2,050 lbs	2,000 lbs	2,150 lbs
Ziegler Model	GB120	GB124	BB121	BB124



Jenkins Iron & Steel Hitch

Hitches

MODEL	HITCH
Manufacturer	Jenkins Iron & Steel
Width	45"
Length	21.5"
Ziegler Model	HITCHSSL



Virnig Land Leveler

Land Levelers				
MODEL	LLV72	LLV78	LLV84	LLV90
Manufacturer	Virnig	Virnig	Virnig	Virnig
Width	73"	80"	86"	92"
Weight	710 lbs	790 lbs	820 lbs	850 lbs
Ziegler Model	LLV72	LLV78	LLV84	LLV90



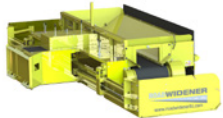
Cat Material Handling Arm

Material Handling Arms	
MODEL	MATERIAL HANDLING ARM
Manufacturer	Caterpillar
Max. Horizontal Reach	84"
Capacity	2,000 lbs
Weight	280 lbs
Ziegler Model	MATARMSSL



EZ Spot UR Pole Setter

Pole Setters	
MODEL	EZ-HD08
Manufacturer	EZ Spot UR
Rotation	115°
Jaw Opening	22.19"
Weight	1,406 lbs
Ziegler Model	HDPOLESET



Road Widener

Road Wideners			
MODEL	FH MANUAL CONTROL	FH REMOTE CONTROL	DD REMOTE CONTROL
Manufacturer	Road Widener	Road Widener	Road Widener
Required Hydraulic Flow	24 gpm	24 gpm	24 gpm
Width	125"	125"	138"
Discharge Style	Left or Right	Left or Right	Dual
Weight	2,900 lbs	2,900 lbs	3,400 lbs
Ziegler Model	RDWIDENERL or RDWIDENERR	RDWIDENERL or RDWIDENERR	RDWIDENERD



Cat Saw

Saws						
MODEL	SW345B	SW360B	SW360B	SW360B	SW380B	SW460B
Manufacturer	Caterpillar	Caterpillar	Caterpillar	Caterpillar	Caterpillar	Caterpillar
Required Hydraulic Flow	33 gpm	33 gpm	33 gpm	33 gpm	33 gpm	40 gpm
Max. Cutting Depth	18"	24"	24"	24"	32"	24"
Wheel Width	3"	3"	6"	8"	10"	3" / 6" / 8"
Weight	2,549 lbs	3,420 lbs	3,009 lbs	3,075 lbs	3,175 lbs	3,009 – 3,240 lbs
Ziegler Model	SW345B	SW360B	SW360B	SW360B	SW380B	SW460B



Cat Scrap Shears

Scrap Shears	
MODEL	S308
Manufacturer	Caterpillar
Jaw Opening	9.4"
Weight	1,494 lbs
Ziegler Model	S308 SSL



McCormick Silt Fence Plow

Silt Fence Plows				
MODEL	SFP-36 RS	SFP-36 PP	SFP-48 RS	SFP-48 PP
Manufacturer	McCormick	McCormick	McCormick	McCormick
Weight	875 lbs	1,090 lbs	958 lbs	1,165 lbs
Ziegler Model	SFP-36	SFP-36	SFP-48	SFP-48



Cat Trencher

Trenchers			
MODEL	T109 (T6B)	T112 (T9B)	T315 (T15B)
Manufacturer	Caterpillar	Caterpillar	Caterpillar
Required Hydraulic Flow	11 – 23 gpm	11 – 23 gpm	25 – 40 gpm
Standard Boom Length	36"	48"	60"
Weight	1,099 lbs	1,199 lbs	1,301 lbs
Chain Type	Combo	Combo	Combo
Trench Width	6"	6"	6"
Ziegler Model	T109 (T6B)	T112 (T9B)	T315 (T15B)



Cat 903 Bucket

Buckets With BOCE (903)						
MODEL	MH BUCKET	MH BUCKET	MH BUCKET	GP BUCKET	GP BUCKET	LM BUCKET
Manufacturer	Caterpillar	Caterpillar	Caterpillar	Caterpillar	Caterpillar	Caterpillar
Part Number	472-2546	472-2548	469-0774	276-5715	384-1700	261-1368
Width	86"	98"	104"	70"	74"	70"
Coupler Style	SSL	SSL	SSL	SSL	SSL	SSL
Capacity	1.07 cu yd	1.25 cu yd	1.33 cu yd	0.8 cu yd	1 cu yd	1.3 cu yd
Weight	804 lbs	881 lbs	920 lbs	686 lbs	814 lbs	862 lbs
Ziegler Model	BKCWLSSL	BKCWLSSL	BKCWLSSL	BKCWLSSL	BKCWLSSL	BKCWLSSL



Cat 906 Bucket

Buckets With BOCE (906 – 908)								
MODEL	GP BUCKET	GP BUCKET	GP BUCKET	GP BUCKET	GP BUCKET	GP BUCKET	GP BUCKET	GP BUCKET
Manufacturer	Caterpillar	Caterpillar	Caterpillar	Caterpillar	Caterpillar	Caterpillar	Caterpillar	Caterpillar
Part Number	384-1700	284-9279	284-9281	312-0122	311-7776	286-0581	286-0584	472-5370
Width	74"	74"	74"	80"	80"	81"	81"	81"
Coupler Style	SSL	SSL	Horizontal Pin	SSL	Horizontal Pin	SSL	Horizontal Pin	Horizontal Pin
Capacity	1 cu yd	1.2 cu yd	1.2 cu yd	1.3 cu yd	1.3 cu yd	1.4 cu yd	1.4 cu yd	1.7 cu yd
Weight	814 lbs	790 lbs	871 lbs	908 lbs	911 lbs	979 lbs	979 lbs	966 lbs
Ziegler Model	BKCWLSSL	BKCWLSSL	BKCWLHP	BKCWLSSL	BKCWLHP	BKCWLSSL	BKCWLHP	BKCWLHP

Buckets With BOCE (906 – 908, cont.)					
MODEL	LM BUCKET	LM BUCKET	LM BUCKET	LM BUCKET	INDUSTRIAL GRAPPLE
Manufacturer	Caterpillar	Caterpillar	Caterpillar	Caterpillar	Caterpillar
Part Number	261-1391	261-1385	261-1404	261-1396	368-2500
Width	81"	81"	81"	81"	81"
Coupler Style	Horizontal Pin	SSL	Horizontal Pin	SSL	SSL
Capacity	1.5 cu yd	1.6 cu yd	2 cu yd	2 cu yd	2 cu yd
Weight	1,019 lbs	1,016 lbs	1,135 lbs	1,135 lbs	1,295 lbs
Ziegler Model	BKCWLHP	BKCWLSSL	BKCWLHP	BKCWLSSL	BKCWLSSL



Cat 910 – 918 Bucket

Buckets With BOCE (910 – 918)					
MODEL	GP BUCKET	GP BUCKET	GP BUCKET	GP BUCKET	GP BUCKET
Manufacturer	Caterpillar	Caterpillar	Caterpillar	Caterpillar	Caterpillar
Part Number	472-6534	472-6539	472-6541	390-8219	492-2491
Cutting Edge	BOCE	BOCE	BOCE	BOCE	BOCE
Coupler Style	IT	IT	IT	IT	IT
Capacity	1.7 cu yd	1.9 cu yd	2 cu yd	2.2 cu yd	2.4 cu yd
Weight	1,221 lbs	1,265 lbs	1,362 lbs	1,393 lbs	1,480 lbs
Ziegler Model	BKCWLIT	BKCWLIT	BKCWLIT	BKCWLIT	BKCWLIT



Cat Forks

Forks (903)	
MODEL	FORK CARRIAGE
Manufacturer	Caterpillar
Part Number of Carriage	261-1315
Part Number of Forks	195-6942
Carriage Width	46"
Fork Tine Dimensions	1.5" x 4" x 42"
Ziegler Model	FKCWL48

Forks (906 – 908)	
MODEL	FORK CARRIAGE
Manufacturer	Caterpillar
Part Number of Carriage	261-1425
Part Number of Forks	202-5483
Carriage Width	55"
Fork Tine Dimensions	2" x 4" x 48"
Ziegler Model	FKCWL48

Forks (910 – 918)	
MODEL	IT FORKS
Manufacturer	Caterpillar
Part Number of Carriage	390-8288
Part Number of Forks	195-6938
Carriage Width	61"
Fork Tine Dimensions	2" x 5" x 54"
Ziegler Model	FKCWLIT

Forks (914 – 920)	
MODEL	FUSION FORKS
Manufacturer	Caterpillar
Part Number of Carriage	532-8222
Part Number of Forks	553-3873
Carriage Width	62"
Fork Tine Dimensions	2" x 5" x 53"
Ziegler Model	FKCWL FUS



Cat Pallet Forks

Forks					
MACHINE	926 – 938				
Manufacturer	Caterpillar	Caterpillar	Caterpillar	Caterpillar	Caterpillar
Style	Pallet Forks	Pallet Forks	Pallet Forks	Construction Forks	Construction Forks
Tine Length	48"	54"	60"	60"	72"
Carriage Width	60"	60"	60"	96"	96"
Coupler Style	Fusion	Fusion	Fusion	Fusion	Fusion
Weight	926 lbs	970 lbs	1,020 lbs	961 lbs	1,004 lbs
Ziegler Model	FK930FUS48	FK930FUS54	FK930FUS60	FK930FUS60	FK930FUS72



Cat Construction Forks

Forks (cont.)				
MACHINE	950 – 972			
Manufacturer	Caterpillar	Caterpillar	Caterpillar	Caterpillar
Style	Construction Forks	Construction Forks	Construction Forks	Construction Forks
Tine Length	60"	72"	84"	96"
Carriage Width	96"	96"	96"	96"
Coupler Style	Fusion	Fusion	Fusion	Fusion
Weight	2,911 lbs	3,049 lbs	3,186 lbs	3,323 lbs
Ziegler Model	FK950FUS60	FK950FUS72	FK950FUS84	FK950FUS96



Cat Material Handling Arm

Material Handling Arms (Jib Boom)		
MACHINE	926 – 938	950 – 972
Manufacturer	Caterpillar	Caterpillar
Extendable Length	97.5" – 149"	123" – 183"
Coupler Style	Fusion	Fusion
Weight	534 lbs	1,560 lbs
Ziegler Model	MATARMFUS	MATARMFUS



Cat Fusion Hook

Fusion Hooks		
MACHINE	926 – 966	
Manufacturer	Caterpillar	Caterpillar
Style	Flat Back	Blank
Part Number	315-6309	317-5562
Weight	409 lbs	787 lbs
Ziegler Model	HOOKFBFUS	HOOKBLFUS
Install (includes hooks)	\$4,750	\$5,250



Cat Fusion Coupler

Fusion Coupler			
MACHINE	966 – 972	980	982
Manufacturer	Caterpillar	Caterpillar	Caterpillar
Ziegler Model	CPL966FUS	CPL980FUS	CPL982FUS
Weight	1,133	1,811	2,125



Cat Light Material Buckets

Light Material Buckets					
MACHINE	926 – 938				
Manufacturer	Caterpillar	Caterpillar	Caterpillar	Caterpillar	Caterpillar
Width	108"	108"	108"	108"	108"
Coupler Style	Fusion	Fusion	Fusion	Fusion	Fusion
Capacity	4.0 CYD	4.5 CYD	5 CYD	5.5 CYD	6.5 CYD
Weight	2,689	2,873	3,015	3,172	3,311
Ziegler Model	BK930FUSLM	BK930FUSLM	BK930FUSLM	BK930FUSLM	BK930FUSLM



Cat Forks

Forks				
MODEL	TH FORKS	TH FORKS	TH FORKS	TH FORKS
Manufacturer	Caterpillar	Caterpillar	Caterpillar	Caterpillar
Part Number of Carriage	301-9757	301-9758	375-6293	474-0140
Part Number of Forks	301-9755	301-9755	301-9755	301-9755
Carriage Width	50"	72"	50"	72"
Dimensions	2.36" x 4" x 48"	2.36" x 4" x 48"	2.36" x 4" x 48"	2.36" x 4" x 48"
Type of Carriage	Standard	Standard	Tilt	Tilt Rotate
Ziegler Model	FKTH	FKTH	FORKTH10MR, FORKTH12FR, FORKTH	FKTH10F, FKTH12M, FKTH



Cat Truss Boom

Truss Booms					
MODEL	TH TRUSS BOOM	TH TRUSS BOOM	TH LIFTING HOOK	MATERIAL HANDLING ARM	LIFTING HOOK
Manufacturer	Caterpillar	Bradco	Caterpillar	Caterpillar	Star Industries
Part Number	169-3945	N/A	169-6460	229-9714	1371B
Coupler Style	CAT IT	CAT IT	CAT IT	CAT IT	Slide-Over Forks
Capacity	1,100 lbs	2,000 lbs	461 lbs	990 lbs	12,000 lbs
Length	13"	12"	19.7"	79" / 117" / 155"	28.5"
Ziegler Model	TRUSS12	TRUSS12	HOOKTH	MATARMIT	HOOKTH



Thielen Work Platform

Baskets		
MODEL	WORK PLATFORM	WORK PLATFORM
Manufacturer	Thielen	Caterpillar
Dimensions	48" x 96"	48" x 96"
Ziegler Model	WORKPLAT96	WORKPLAT96

Bale Attachments	
MODEL	BALE SPEAR
Manufacturer	Bradco
Part Number	17200-0135
Ziegler Model	BALESPEAR



Bradco Silage Defacer

Silage Defacer	
MODEL	SILAGE DEFACER
Manufacturer	Bradco
Width	96"
Coupler Style	CAT IT
Ziegler Model	SILAGE-DFR



Cat Bucket

Below 1 Ton Buckets

MODEL	10" HD BUCKET	15" HD BUCKET
Manufacturer	Caterpillar	Caterpillar
Part Number	373-4456	432-5173
Width	10"	15"
Number of Teeth	3	3
Capacity	0.49 cu ft	0.85 cu ft
Ziegler Model	BK30010GP	BK30015GP



Cat Ditch-Cleaning Bucket

Below 1 Ton Ditch-Cleaning Buckets

MODEL	28" DITCH-CLEANING BUCKET
Manufacturer	Caterpillar
Part Number	373-4458
Width	28"
Capacity	0.95 cu ft
Ziegler Model	BK30028DC

1 – 2 Ton Buckets

MODEL	9" HD BUCKET	12" HD BUCKET	16" HD BUCKET	18" HD BUCKET	20" HD BUCKET	24" HD BUCKET
Manufacturer	Caterpillar	Caterpillar	Caterpillar	Caterpillar	Caterpillar	Caterpillar
Part Number	147-1014	147-1018	147-1020	190-7387	147-1023	147-1026
Width	9"	12"	16"	18"	20"	24"
Number of Teeth	3	3	3	3	4	4
Capacity	0.65 cu ft	0.78 cu ft	1.16 cu ft	1.40 cu ft	1.59 cu ft	1.97 cu ft
Ziegler Model	BK3019GP	BK30112GP	BK30116GP	BK30118GP	BK30120GP	BK30124GP

1 – 2 Ton Ditch-Cleaning Buckets

MODEL	32" DITCH-CLEANING BUCKET	40" DITCH-CLEANING BUCKET	39" TILTING DITCH-CLEANING BUCKET
Manufacturer	Caterpillar	Caterpillar	Caterpillar
Part Number	147-1029	147-1031	244-3073
Width	32"	40"	39"
Capacity	1.54 cu ft	1.97 cu ft	2.0 cu ft
Ziegler Model	BK30132DC	BK30140DC	BK30139DT

2 Ton Ditch-Cleaning Buckets

MODEL	32" DITCH-CLEANING BUCKET	40" DITCH-CLEANING BUCKET	47" DITCH-CLEANING BUCKET	43" TILTING DITCH-CLEANING BUCKET
Manufacturer	Caterpillar	Caterpillar	Caterpillar	Caterpillar
Part Number	153-7863	153-7865	153-7867	246-0094
Width	32"	40"	47"	43"
Capacity	2.8 cu ft	3.6 cu ft	4.1 cu ft	4.4 cu ft
Ziegler Model	BK30232DC	BK30240DC	BK30247DC	BK30243DT

2 Ton Buckets

MODEL	10" HD BUCKET	12" HD BUCKET	16" HD BUCKET	18" HD BUCKET	20" HD BUCKET	24" HD BUCKET	27" HD BUCKET
Manufacturer	Caterpillar	Caterpillar	Caterpillar	Caterpillar	Caterpillar	Caterpillar	Caterpillar
Part Number	176-7283	153-7851	153-7854	190-7390	153-7857	153-7860	190-7391
Width	10"	12"	16"	18"	20"	24"	27"
Number of Teeth	3	3	3	3	4	4	4
Capacity	1.2 cu ft	1.4 cu ft	1.9 cu ft	2.3 cu ft	2.6 cu ft	3.2 cu ft	3.9 cu ft
Ziegler Model	BK30210GP	BK30212GP	BK30216GP	BK30218GP	BK30220GP	BK30224GP	BK30227GP

3 – 5 Ton Buckets

MODEL	12" HD BUCKET	16" HD BUCKET	18" HD BUCKET	20" HD BUCKET	24" HD BUCKET	30" HD BUCKET	36" HD BUCKET
Manufacturer	Caterpillar	Caterpillar	Caterpillar	Caterpillar	Caterpillar	Caterpillar	Caterpillar
Part Number	464-9900	464-9901	464-9902	464-9903	464-9904	464-9905	464-9906
Width	12"	16"	18"	20"	24"	30"	36"
Number of Teeth	3	3	4	4	4	5	5
Capacity	1.7 cu ft	2.5 cu ft	2.9 cu ft	3.3 cu ft	4.2 cu ft	5.6 cu ft	7 cu ft
Ziegler Model	BK30312GP	BK30316GP	BK30318GP	BK30320GP	BK30324GP	BK30330GP	BK30336GP



Raveling Bucket

3 – 5 Ton Raveling Buckets

MODEL	FB BUCKET	FB BUCKET	FB BUCKET	FBRC BUCKET	FBRC BUCKET	FBRC BUCKET
Manufacturer	Raveling	Raveling	Raveling	Raveling	Raveling	Raveling
Width	24"	30"	36"	24"	30"	36"
Capacity	0.24 cu yd	0.35 cu yd	0.35 cu yd	0.25 cu yd	0.25 cu yd	0.25 cu yd
Ziegler Model	BK30324FB	BK30330FB	BK30336FB	BK303FBRC	BK303FBRC	BK303FBRC



Cat Ditch-Cleaning Bucket

3 – 5 Ton Ditch-Cleaning Buckets

MODEL	40" DITCH-CLEANING BUCKET	47" DITCH-CLEANING BUCKET	55" DITCH-CLEANING BUCKET	47" TILTING DITCH-CLEANING BUCKET
Manufacturer	Caterpillar	Caterpillar	Caterpillar	Caterpillar
Part Number	279-4322	279-4323	282-9315	279-4325
Width	40"	47"	55"	47"
Capacity	0.18 cu yd	0.22 cu yd	0.26 cu yd	0.22 cu yd
Ziegler Model	BK30340DC	BK30347DC	BK30355DC	BK30347DT



Cat 5 – 7 Ton Bucket

5 – 7 Ton Buckets

MODEL	12" HD BUCKET	16" HD BUCKET	18" HD BUCKET	20" HD BUCKET	24" HD BUCKET	30" HD BUCKET	36" HD BUCKET
Manufacturer	Caterpillar	Caterpillar	Caterpillar	Caterpillar	Caterpillar	Caterpillar	Caterpillar
Part Number	464-9907	464-9908	464-9909	464-9910	464-9911	464-9912	464-9913
Width	12"	16"	18"	20"	24"	30"	36"
Number of Teeth	3	3	4	4	4	5	5
Capacity	2.1 cu ft	2.7 cu ft	3.1 cu ft	3.6 cu ft	4.2 cu ft	6.1 cu ft	7.8 cu ft
Ziegler Model	BK30512GP	BK30516GP	BK30518GP	BK30520GP	BK30524GP	BK30530GP	BK30536GP



Raveling Bucket

5 – 7 Ton Raveling Buckets

MODEL	FB BUCKET	FB BUCKET	FB BUCKET	FBRC BUCKET	FBRC BUCKET	FBRC BUCKET
Manufacturer	Raveling	Raveling	Raveling	Raveling	Raveling	Raveling
Width	24"	30"	36"	24"	30"	36"
Capacity	0.24 cu yd	0.35 cu yd	0.35 cu yd	0.25 cu yd	0.25 cu yd	0.25 cu yd
Ziegler Model	BK30524FB	BK30530FB	BK30536FB	BK305FBRC	BK305FBRC	BK305FBRC

5 – 7 Ton Ditch-Cleaning Buckets

MODEL	40" DITCH-CLEANING BUCKET	51" DITCH-CLEANING BUCKET	63" DITCH-CLEANING BUCKET	63" TILTING DITCH-CLEANING BUCKET
Manufacturer	Caterpillar	Caterpillar	Caterpillar	Caterpillar
Part Number	279-4326	279-4327	279-4328	274-9022
Width	40"	51"	63"	63"
Capacity	0.22 cu yd	0.29 cu yd	0.37 cu yd	0.37 cu yd
Ziegler Model	BK30540DC	BK30551DC	BK30563DC	BK30563DT



Cat 7 – 8 Ton Bucket

7 – 8 Ton Buckets

MODEL	13" HD BUCKET	18" HD BUCKET	24" HD BUCKET	30" HD BUCKET	36" HD BUCKET
Manufacturer	Caterpillar	Caterpillar	Caterpillar	Caterpillar	Caterpillar
Part Number	305-6813	295-5951	295-5952	295-5953	295-5954
Width	13"	18"	24"	30"	36"
Number of Teeth	3	4	4	5	5
Capacity	0.13 cu yd	0.20 cu yd	0.30 cu yd	0.40 cu yd	0.51 cu yd
Ziegler Model	BK30813GP	BK30818GP	BK30824GP	BK30830GP	BK30836GP

7 – 8 Ton Ditch-Cleaning Buckets

MODEL	48" DITCH-CLEANING BUCKET	54" DITCH-CLEANING BUCKET	60" DITCH-CLEANING BUCKET
Manufacturer	Caterpillar	Caterpillar	Caterpillar
Part Number	306-5664	306-5662	306-5660
Width	48"	54"	60"
Capacity	0.43 cu yd	0.49 cu yd	0.55 cu yd
Ziegler Model	BK30848DC	BK30854DC	BK30860DC



Raveling Bucket

7 – 8 Ton Raveling Buckets

MODEL	FB BUCKET	FB BUCKET	FBRC BUCKET	FBRC BUCKET	FBRC BUCKET	FBRC BUCKET
Manufacturer	Raveling	Raveling	Raveling	Raveling	Raveling	Raveling
Width	36"	48"	24"	30"	36"	48"
Capacity	0.50 cu yd	0.50 cu yd	0.24 cu yd	0.35 cu yd	0.50 cu yd	0.50 cu yd
Ziegler Model	BK30836FB	BK30848FB	BK308FBRC	BK308FBRC	BK308FBRC	BK308FBRC

10 Ton Buckets

MODEL	18" HD BUCKET	24" HD BUCKET	30" HD BUCKET	36" HD BUCKET	42" HD BUCKET	47" DITCH-CLEANING BUCKET	59" DITCH-CLEANING BUCKET
Manufacturer	Caterpillar	Caterpillar	Caterpillar	Caterpillar	Caterpillar	Caterpillar	Caterpillar
Part Number	547-7030	547-7031	547-7032	547-7033	547-7034	547-7081	547-7082
Width	18"	24"	30"	36"	42"	47"	59"
Capacity	0.24 cu yd	0.35 cu yd	0.46 cu yd	0.59 cu yd	0.71 cu yd	0.35 cu yd	0.46 cu yd
Number of Teeth	3	4	5	5	6	N/A	N/A
Ziegler Model	BK31018GP	BK31024GP	BK31030GP	BK31036GP	BK31042GP	BK31047DC	BK31059DC

10 Ton Buckets cont.

MODEL	71" DITCH-CLEANING BUCKET	FB BUCKET	FB BUCKET	FBRC BUCKET	FBRC BUCKET	FBRC BUCKET	FBRC BUCKET
Manufacturer	Caterpillar	Raveling	Raveling	Raveling	Raveling	Raveling	Raveling
Part Number	547-7083	N/A	N/A	N/A	N/A	N/A	N/A
Width	71"	36"	42"	48"	36"	42"	48"
Capacity	0.55 cu yd	0.35 cu yd	0.35 cu yd	0.40 cu yd	0.35 cu yd	0.35 cu yd	0.40 cu yd
Ziegler Model	BL31071DC	BK31036FB	BK31042FB	BK31048FB	BK310FBRC	BK310FBRC	BK310FBRC

Pins

LINKAGE	300 LINKAGE	301 – 302 LINKAGE	302.7 LINKAGE	303 – 304 LINKAGE	305 – 306 LINKAGE	307 – 308 – 309 LINKAGE	310 LINKAGE
Manufacturer	Caterpillar	Caterpillar	Caterpillar	Caterpillar	Caterpillar	Caterpillar	Caterpillar
Part Number	589-8455	154-2672	154-2683	154-2638	282-2785	308-0324	556-3635





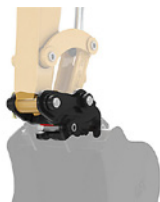
Cat Contractor Grapple

7 – 8 Ton Contractor Grapples	
MODEL	G108 CONTRACTOR GRAPPLE
Manufacturer	Caterpillar
Max. Jaw Opening	69.5"
Weight	816 lbs
Ziegler Model	GRAPPLE308



CMP Rotating Grapple

Rotating Grapples					
MODEL	CMPHG61/ BKGRAP303	CMPHG82/ BKGRAP303	CMPHG112/ BKGRAP305	CMPHG242/ BKGRAP308	CMPHG262/ BKGRAP310
Manufacturer	CMP	CMP	CMP	CMP	CMP
Jaw Type	Bucket	Bucket	Bucket	Bucket	Bucket
Capacity	3.25 cu ft	4.25 cu ft	4.25 cu ft	10 cu ft	10 cu ft
Max. Opening	42"	42"	55"	62"	62"
Weight	475 lbs	600 lbs	830 lbs	1,350 lbs	1,500 lbs
Machine Size	3 ton	3 ton	5 ton	8 ton	10 ton
Ziegler Model	BKGRAP303	BKGRAP303	BKGRAP305	BKGRAP308	BKGRAP310



1 – 2 Ton Quick Couplers	
MODEL	MANUAL DUAL LOCK COUPLER
Manufacturer	Caterpillar
Part Number	361-1092
Weight	26 lbs
Ziegler Model	CPL301MAN

2 Ton Quick Couplers	
MODEL	MANUAL DUAL LOCK COUPLER
Manufacturer	Caterpillar
Part Number	361-1093
Weight	44 lbs
Ziegler Model	CPL302MAN

302.7D Coupler	
MODEL	MANUAL DUAL LOCK COUPLER
Manufacturer	Caterpillar
Part Number	361-1093
Weight	57 lbs
Ziegler Model	CPL302MAN

3 – 5 Ton Quick Couplers		
MODEL	MANUAL DUAL LOCK COUPLER	HYDRAULIC DUAL LOCK COUPLER
Manufacturer	Caterpillar	Caterpillar
Part Number	444-7494	485-5300
Weight	76 lbs	91 lbs
Ziegler Model	CPL303MAN	CPL303HYD

5 – 7 Ton Couplers			
MODEL	MANUAL DUAL LOCK COUPLER	HYDRAULIC DUAL LOCK COUPLER	HYDRAULIC DUAL LOCK TILT COUPLER
Manufacturer	Caterpillar	Caterpillar	Caterpillar
Part Number	444-7496	485-5301	485-5304
Weight	113 lbs	129 lbs	247 lbs
Ziegler Model	CPL305MAN	CPL305HYD	CPL305HYD



Cat 7 – 9 Ton Coupler

7 – 9 Ton Couplers		
MODEL	MANUAL DUAL LOCK COUPLER	HYDRAULIC DUAL LOCK COUPLER (308E)
Manufacturer	Caterpillar	Caterpillar
Part Number	444-7498	485-5302
Weight	196 lbs	206 lbs
Ziegler Model	CPL308MAN	CPL308HYD

10 Ton Couplers	
MODEL	HYDRAULIC DUAL LOCK COUPLER (310)
Manufacturer	Caterpillar
Part Number	485-5306
Weight	338 lbs
Ziegler Model	CPL310HYD



Cat Hydraulic Thumb

1 – 2 Ton Thumbs

MODEL	HYDRAULIC THUMB
Manufacturer	Caterpillar
Part Number	555-8424
Bucket Size Required	18" – 36"
Ziegler Model	THB301HYD

2 Ton Thumbs

MODEL	HYDRAULIC THUMB
Manufacturer	Caterpillar
Part Number	451-6380
Bucket Size Required	18" – 36"
Ziegler Model	THB302HYD

3 – 5 Ton Thumbs

MODEL	HYDRAULIC THUMB
Manufacturer	Caterpillar
Part Number	452-2740
Bucket Size Required	18" – 36"
Ziegler Model	THB303HYD

5 – 7 Ton Thumbs

MODEL	HYDRAULIC THUMB
Manufacturer	Caterpillar
Part Number	575-0496
Bucket Size Required	18" – 36"
Ziegler Model	THB305HYD

7 – 8 Ton Thumbs

MODEL	HYDRAULIC THUMB
Manufacturer	Caterpillar
Part Number	305-6741
Bucket Size Required	18" – 36"
Ziegler Model	THB308HYD

10 Ton Thumbs

MODEL	HYDRAULIC THUMB
Manufacturer	Caterpillar
Part Number	540-6735
Bucket Size Required	18" – 42"
Ziegler Model	THB310HYD



Cat Auger Drive

Auger Drives				
MODEL	A11 (A7B)	A23 (A14B)	A41 (A19B)	A68 (A26B)
Manufacturer	Caterpillar	Caterpillar	Caterpillar	Caterpillar
Required Hydraulic Flow	20 gpm	21 gpm	21 gpm	34.3 gpm
Weight	179 lbs	263 lbs	207 lbs	237 lbs
Ziegler Model	A11 MHE	A23 MHE	A41 MHE	A68 MHE



Cat Auger Bit

Auger Bits								
MODEL	STANDARD BIT 6"	STANDARD BIT 9"	STANDARD BIT 12"	STANDARD BIT 15"	STANDARD BIT 18"	STANDARD BIT 24"	STANDARD BIT 30"	STANDARD BIT 36"
Manufacturer	Caterpillar	Caterpillar	Caterpillar	Caterpillar	Caterpillar	Caterpillar	Caterpillar	Caterpillar
Part Number	153-4083	153-4084	153-4085	366-7752	153-4086	153-4089	217-3194	153-4091
Bit Diameter	6"	9"	12"	15"	18"	24"	30"	36"
Bit Type	Standard Duty	Standard Duty	Standard Duty	Standard Duty	Standard Duty	Standard Duty	Standard Duty	Standard Duty
Weight	51 lbs	75 lbs	101 lbs	111 lbs	143 lbs	203 lbs	282 lbs	381 lbs
Ziegler Model	AUGERBIT6	AUGERBIT9	AUGERBIT12	AUGERBIT15	AUGERBIT18	AUGERBIT24	AUGERBIT30	AUGERBIT36

Industrial / Tree Auger Bits								
MODEL	INDUSTRIAL BIT 6"	INDUSTRIAL BIT 9"	INDUSTRIAL BIT 12"	INDUSTRIAL BIT 16"	INDUSTRIAL BIT 18"	INDUSTRIAL BIT 24"	TREE BIT 24"	TREE BIT 36"
Manufacturer	Caterpillar	Caterpillar	Caterpillar	Caterpillar	Caterpillar	Caterpillar	Caterpillar	Caterpillar
Part Number	372-0260	372-0261	372-0262	372-0263	372-0264	372-0265	153-4092	153-4095
Bit Diameter	6"	9"	12"	16"	18"	24"	24" / 12"	36" / 18"
Bit Type	Industrial Duty	Industrial Duty	Industrial Duty	Industrial Duty	Industrial Duty	Industrial Duty	Tree Bit	Tree Bit
Weight	57 lbs	72 lbs	91 lbs	114 lbs	107 lbs	150 lbs	163 lbs	309 lbs
Ziegler Model	AUGERBIT6I	AUGERBIT9I	AUGERBIT12I	AUGERBIT16I	AUGERBIT18I	AUGERBIT24I	TREEBIT24	TREEBIT36

Auger Adaptors / Extensions						
MODEL	ROUND TO HEX ADAPTOR	HEX TO ROUND ADAPTOR	12" AUGER EXTENSION	24" AUGER EXTENSION	3' TELESCOPING EXTENSION	6' TELESCOPING EXTENSION
Manufacturer	Caterpillar	Caterpillar	Caterpillar	Caterpillar	Caterpillar	Caterpillar
Part Number	217-3191	156-6329	156-6328	217-3192	372-0256	372-0257
Weight	15 lbs	15 lbs	20 lbs	33 lbs	43 lbs	77 lbs
Ziegler Model	AUGERADAPT	AUGERADAPT	AUGEREXT12	AUGEREXT24	AUGTELEXT3	AUGTELEXT6



Cat Mulcher

Mulchers		
MODEL	HM208	HM210
Manufacturer	Caterpillar	Caterpillar
Part Number	504-6012	504-6013
Weight	1,078 lbs	1,188 lbs
Working Width	32"	40"
Ziegler Model	HM208	HM210



Cat Compactor Plate

Compactor Plates		
MODEL	CVP16	CVP40
Manufacturer	Caterpillar	Caterpillar
Required Hydraulic Flow	10 gpm	18 gpm
Plate Width	12"	23"
Plate Length	24"	38"
Weight	474 lbs	884 lbs
Ziegler Model	CVP16	CVP40



Cat Hammer

Hammers						
MODEL	B4	B4S	B6	B6S	B8	B8S
Manufacturer	Caterpillar	Caterpillar	Caterpillar	Caterpillar	Caterpillar	Caterpillar
MHE Size	302.5 – 306	302.6 – 306	304 – 309	304 – 309	306 – 309	306 – 309
Max. Hydraulic Flow	13 gpm	13 gpm	18.5 gpm	18.5 gpm	19 gpm	19 gpm
Blows Per Minute	600 – 1,100	600 – 1,100	500 – 900	500 – 900	400 – 800	400 – 800
Weight	420 lbs	435 lbs	747 lbs	807 lbs	850 lbs	865 lbs
Ziegler Model	B4	B4S	B6	B6S	B8	B8S

Hammers (cont.)					
MODEL	B9	B9S	H55S MHE	H65S MHE	H95S MHE
Manufacturer	Caterpillar	Caterpillar	Caterpillar	Caterpillar	Caterpillar
MHE Size	307 – 310	307 – 310	302.5 – 305.5	304 – 309	307 – 310
Max. Hydraulic Flow	26 gpm	26 gpm	22 gpm	30 gpm	40 gpm
Blows Per Minute	400 – 800	400 – 800	600 – 1,680	720 – 1,720	700 – 1,260
Weight	1,368 lbs	1,345 lbs	595 lbs	607 lbs	1,665 lbs
Ziegler Model	B9	B9S	H55S	H65S	H95S



Cat Ripper

3 – 5 Ton Excavator Rippers

MODEL	19" RIPPER
Manufacturer	Caterpillar
Width	10"
Shank Length	19.3"
Weight	99 lbs
Ziegler Model	RIP303

5 – 7 Ton Rippers

MODEL	27" RIPPER
Manufacturer	Caterpillar
Width	11"
Shank Length	27"
Weight	134 lbs
Ziegler Model	RIP305

7 – 8 Ton Rippers

MODEL	34" RIPPER
Manufacturer	Caterpillar
Width	13.6"
Shank Length	33.9"
Weight	235 lbs
Ziegler Model	RIP308

10 Ton Rippers

MODEL	37" RIPPER
Manufacturer	Caterpillar
Width	16.5"
Shank Length	37.4"
Weight	373 lbs
Ziegler Model	RIP310



Cat Shears

3 – 7 Ton Scrap Shears

MODEL	S308
Manufacturer	Caterpillar
Cutting Circuit Max. Flow	16 gpm
Rotation Circuit Max. Flow	5.3 gpm
Cycle Time Open	3.5 seconds
Cycle Time Close	2.5 seconds
Jaw Opening	9.4"
Weight	1,358 lbs
Ziegler Model	S308 MHE

312 Linkage (313, 313 GC, 315, 315 GC Next Gen)

STYLE	GENERAL DUTY DIG					
Manufacturer	Caterpillar	Caterpillar	Caterpillar	Caterpillar	Caterpillar	Caterpillar
Width	18"	24"	30"	36"	42"	48"
Capacity	0.27 cu yd	0.40 cu yd	0.54 cu yd	0.69 cu yd	0.84 cu yd	1 cu yd
Weight	594 lbs	710 lbs	819 lbs	931 lbs	1,034 lbs	1,126 lbs
Ziegler Model	BK31218GD	BK31224GD	BK31230GD	BK31236GD	BK31242GD	BK31248GD

312 Linkage (313, 313 GC, 315, 315 GC Next Gen) (cont.)

STYLE	DITCH	FBSC SAND	FBRC SAND	RB SAND	SKELETON	KRYPTO KLAW
Manufacturer	Caterpillar	Raveling	Raveling	Raveling	Raveling	Rockland
Width	60"	40"	40"	36" B X 40" T	42"	42"
Capacity	0.97 cu yd	0.88 cu yd	0.88 cu yd	0.875 cu yd	1 cu yd	0.90 cu yd
Weight	1,005 lbs	1,430 lbs	1,160 lbs	1,050 lbs	1,360 lbs	2,658 lbs
Ziegler Model	BK31260DC	BK312FBSC	BK312FBRC	BK312RB	BK312SKEL	BK312KRYPT

316 Linkage (317, 317 GC Next Gen)

STYLE	GENERAL DUTY DIG					WIDE TIP
Manufacturer	Caterpillar	Caterpillar	Caterpillar	Caterpillar	Caterpillar	Caterpillar
Width	24"	30"	36"	42"	48"	48"
Capacity	0.46 cu yd	0.64 cu yd	0.81 cu yd	1 cu yd	1.19 cu yd	1.40 cu yd
Weight	1,003 lbs	1,138 lbs	1,282 lbs	1,387 lbs	1,542 lbs	1,636 lbs
Ziegler Model	BK31624GD	BK31630GD	BK31636GD	BK31642GD	BK31648GD	BK31648WT

316 Linkage (317, 317 GC Next Gen) (cont.)

STYLE	DITCH	FBSC SAND	FBRC SAND	RB SAND	SKELETON	KRYPTO KLAW
Manufacturer	Caterpillar	Raveling	Raveling	Raveling	Raveling	Rockland
Width	72"	44"	44"	42" B x 48" T	48"	48"
Capacity	1.49 cu yd	1.5 cu yd	1.5 cu yd	1.5 cu yd	1.25 cu yd	1.1 cu yd
Weight	1,457 lbs	2,175 lbs	1,945 lbs	1,890 lbs	1,405 lbs	2,844 lbs
Ziegler Model	BK31672DC	BK316FBSC	BK316FBRC	BK316RB	BK316SKEL	BK316KRYPT



Cat Ditch Bucket



Cat General Duty Dig Bucket



Rockland Krypto Klaw Bucket

B Linkage (320, 320 GC, 323, 325 Next Gen)

STYLE	HEAVY DUTY DIG						WIDE TIP
Manufacturer	Caterpillar	Caterpillar	Caterpillar	Caterpillar	Caterpillar	Caterpillar	Caterpillar
Width	24"	30"	36"	42"	48"	54"	48"
Capacity	0.61 cu yd	0.84 cu yd	1.06 cu yd	1.31 cu yd	1.56 cu yd	1.81 cu yd	1.80 cu yd
Weight	1,447 lbs	1,670 lbs	1,842 lbs	1,966 lbs	2,150 lbs	2,338 lbs	2,079 lbs
Ziegler Model	BKB24HD	BKB30HD	BKB36HD	BKB42HD	BKB48HD	BKB54HD	BKB48WT

B Linkage (320, 320 GC, 323, 325 Next Gen) (cont.)

STYLE	DITCH	DITCH	FBSC SAND	FBRC SAND	RB SAND	SKELETON	KRYPTO KLAW
Manufacturer	Caterpillar	Caterpillar	Raveling	Raveling	Raveling	Raveling	Rockland
Width	60"	72"	48"	44"	36" B x 44" T	48"	48"
Capacity	1.32 cu yd	1.62 cu yd	2 cu yd	2 cu yd	2 cu yd	1.75 cu yd	1.1 cu yd
Weight	1,436 lbs	1,630 lbs	2,510 lbs	2,310 lbs	2,270 lbs	2,625 lbs	2,885 lbs
Ziegler Model	BKB60DC	DBB72DC	BKBFBSC48	BKBFBRC44	BKBRB36	BKBSKEL	BKBKRYPT

CB Linkage (326, 330, 330 GC, 335 Next Gen)

STYLE	HEAVY DUTY DIG						
Manufacturer	Caterpillar	Caterpillar	Caterpillar	Caterpillar	Caterpillar	Caterpillar	Caterpillar
Width	30"	36"	42"	48"	54"	60"	66"
Capacity	0.93 cu yd	1.19 cu yd	1.46 cu yd	1.74 cu yd	2.01 cu yd	2.3 cu yd	2.58 cu yd
Weight	1,882 lbs	2,098 lbs	2,306 lbs	2,463 lbs	2,684 lbs	2,893 lbs	3,063 lbs
Ziegler Model	BKCB30HD	BKCB36HD	BKCB42HD	BKCB48HD	BKCB54HD	BKCB60HD	BKCB66HD

CB Linkage (326, 330, 330 GC, 335 Next Gen) (cont.)

STYLE	DITCH	FBSC SAND	FBRC SAND	RB SAND	SKELETON	KRYPTO KLAW
Manufacturer	Caterpillar	Raveling	Raveling	Raveling	Raveling	Rockland
Width	72"	54"	54"	44" B x 48" T	48"	48"
Capacity	1.99 cu yd	2.25 cu yd	2.25 cu yd	2.25 cu yd	2 cu yd	1.5 cu yd
Weight	2,094 lbs	3,225 lbs	2,700 lbs	2,845 lbs	2,910 lbs	3,820 lbs
Ziegler Model	BKCB72DC	BKCBFBSC54	BKCBFBRC54	BKCBRB44	BKCBSKEL	BKCBKRYPT

DB Linkage (336, 336 GC, 340 Next Gen)

STYLE	HEAVY DUTY DIG						
Manufacturer	Caterpillar	Caterpillar	Caterpillar	Caterpillar	Caterpillar	Caterpillar	Caterpillar
Width	36"	42"	48"	54"	60"	66"	72"
Capacity	1.24 cu yd	1.54 cu yd	1.83 cu yd	2.14 cu yd	2.46 cu yd	2.77 cu yd	3.08 cu yd
Weight	2,480 lbs	2,839 lbs	3,139 lbs	3,350 lbs	3,648 lbs	3,948 lbs	4,162 lbs
Ziegler Model	BKDB36HD	BKDB42HD	BKDB48HD	BKDB54HD	BKDB60HD	BKDB66HD	BKDB72HD



Raveling Skeleton Bucket



Raveling Flat Bottom Square Corner (FBSC) Bucket



Raveling Round Bottom (RB) Bucket

DB Linkage (336, 336 GC, 340 Next Gen) (cont.)

STYLE	DITCH	FBSC SAND	FBRC SAND	RB SAND	SKELETON	KRYPTO KLAW
Manufacturer	Caterpillar	Raveling	Raveling	Raveling	Raveling	Rockland
Width	72"	60"	60"	42" B x 52" T	60"	54"
Capacity	2.56 cu yd	3 cu yd	3.5 cu yd	3.5 cu yd	3.0 cu yd	1.98 cu yd
Weight	2,529 lbs	3,985 lbs	3,810 lbs	3,795 lbs	3,990 lbs	5,692 lbs
Ziegler Model	BKDB72DC	BKDBFBSC60	BKDBFBRC60	BKDBRB42	BKDBSKEL	BKDBKRYPT

TB Linkage (349, 350, 352 Next Gen)

STYLE	HEAVY DUTY DIG				
Manufacturer	Caterpillar	Caterpillar	Caterpillar	Caterpillar	Caterpillar
Width	48"	54"	60"	66"	72"
Capacity	2.09 cu yd	2.44 cu yd	2.8 cu yd	3.15 cu yd	3.52 cu yd
Weight	4,129 lbs	4,409 lbs	4,779 lbs	5,150 lbs	5,437 lbs
Ziegler Model	BKTB48HD	BKTB54HD	BKTB60HD	BKTB66HD	BKTB72HD

TB Linkage (349, 350, 352 Next Gen) (cont.)

STYLE	FBRC SAND	FBRC SAND	RB SAND	SKELETON	KRYPTO KLAW
Manufacturer	Raveling	Raveling	Raveling	Raveling	Rockland
Width	66"	72"	52" B x 60" T	60"	60"
Capacity	4.5 cu yd	5.5 cu yd	4.25 cu yd	3.75 cu yd	2.5 cu yd
Weight	4,595 lbs	5,430 lbs	3,890 lbs	5,365 lbs	7,326 lbs
Ziegler Model	BKTBFBRC66	BKTBFBRC72	BKTBFB52	BKTBSKEL	BKTBKRYPT

VB2 Linkage (374 Next Gen)

STYLE	HEAVY DUTY DIG	FBRC SAND	RB SAND
Manufacturer	Caterpillar	Raveling	Raveling
Width	79"	72"	54" B x 62" T
Capacity	4.97 cu yd	6 cu yd	5.25 cu yd
Weight	8,609 lbs	5,790 lbs	5,800 lbs
Ziegler Model	BKVB79HD	BKVBFBRC72	BKVBRB54

HB2 Linkage (395 Next Gen)

STYLE	SEVERE DUTY DIG	FBRC SAND	RB SAND
Manufacturer	Caterpillar	Raveling	Raveling
Width	85"	78"	66" B x 74" T
Capacity	6.5 cu yd	8 cu yd	7 cu yd
Weight	10,198 lbs	7,825 lbs	7,275 lbs
Ziegler Model	BKHB85SD	BKHFBRC78	BKHBRB66



Cat Heavy Duty Dig
Bucket



Raveling Flat Bottom
Round Corner (FBRC)
Bucket



Cat Coupler

Couplers (Hydraulic Pin Grabber)

LINKAGE	312	316	B	CB	DB	TB	VB2	HB2
Manufacturer	Caterpillar	Caterpillar	Caterpillar	Caterpillar	Caterpillar	Caterpillar	Caterpillar	Caterpillar
Weight	414 lbs	680 lbs	837 lbs	1,028 lbs	1,365 lbs	2,082 lbs	2,708 lbs	3,199 lbs
Ziegler Model	CPL312HYD	CPL316HYD	CPLBHYD	CPLCBHYD	CPLDBHYD	CPLTBHYD	CPLVBHYD	CPLHBHYD
Install	\$555	\$555	\$555	\$555	\$555	\$555	\$555	\$555



Cat Thumb

Thumbs (Hydraulic Full Rotation – Pro Plus)

LINKAGE	312	316	B	CB	DB	TB
Manufacturer	Caterpillar	Caterpillar	Caterpillar	Caterpillar	Caterpillar	Caterpillar
Weight	769 – 1,006 lbs	1,096 – 1,208 lbs	1,740 – 1,922 lbs	1,909 – 2,229 lbs	2,590 – 2,906 lbs	2,769 – 3,157 lbs
Ziegler Model	THB312PLUS	THB316PLUS	THBBPLUS	THBCBPLUS	THBDBPLUS	THBTBPLUS
Install	\$4,410	\$4,410	\$4,410	\$4,410	\$4,410	\$4,410



Raveling Ripper

Rippers (Frost Tooth)

LINKAGE	312	316	B	CB	DB	TB
Manufacturer	Raveling	Raveling	Raveling	Raveling	Raveling	Raveling
Weight	375 lbs	685 lbs	715 lbs	850 lbs	1,100 lbs	1,785 lbs
Tip Part Number	6Y0352ARM	6Y0352ARM	6Y0352ARM	6Y0352ARM	6Y0352ARM	114-0453
Ziegler Model	RIP312	RIP316	RIPB	RIPCB	RIPDB	RIPTB



Cat Compaction Wheel

Compaction Wheels

LINKAGE	312	316	B	CB	DB	TB
Manufacturer	Caterpillar	Caterpillar	Caterpillar	Caterpillar	Caterpillar	Caterpillar
Width	24"	36"	36"	36"	36"	36"
Weight	2,183 lbs	2,793 lbs	2,807 lbs	4,046 lbs	4,092 lbs	4,905 lbs
Ziegler Model	COMPWHL312	COMPWHL316	COMPWHLB	COMPWHLCB	COMPWHLDB	COMPWHLTB



Cat Performance Series Hammer

Performance Series Hammers

MODEL	H110 S	H115 S	H120 S	H130 S	H140 S	H160 S	H180 S	H190 S	H215 S
Manufacturer	Caterpillar	Caterpillar	Caterpillar	Caterpillar	Caterpillar	Caterpillar	Caterpillar	Caterpillar	Caterpillar
Machine Size	311 – 317	311 – 320	316 – 336	320 – 352	320 – 352	336 – 374	349 – 374	349 – 374	374 – 395
Rated Hydraulic Flow	16 – 32 gpm	18 – 34 gpm	26 – 45 gpm	32 – 58 gpm	42 – 60 gpm	58 – 79 gpm	58 – 79 gpm	74 – 101 gpm	95 – 122 gpm
Operating Pressure	2,320 psi	2,175 psi	2,175 psi	2,175 psi	2,320 psi	2,320 psi	2,320 psi	2,320 psi	2,610 psi
Blows Per Minute	450 – 1,000	370 – 800	350 – 620	320 – 600	325 – 540	400 – 505	275 – 450	370 – 530	300 – 520
Weight	2,372 lbs	2,570 lbs	3,983 lbs	4,362 lbs	5,898 lbs	7,785 lbs	9,371 lbs	10,672 lbs	22,522 lbs
Ziegler Model	H110S	H115S	H120S	H130S	H140S	H160S	H180S	H190S	H215S



Cat GC Hammer

GC Hammers

MODEL	H110GC S	H115GC S	H120GC S	H130GC S	H140GC S	H160GC	H180GC
Manufacturer	Caterpillar	Caterpillar	Caterpillar	Caterpillar	Caterpillar	Caterpillar	Caterpillar
Machine Size	311 – 317	311 – 317	320 – 336	320 – 336	326 – 352	330 – 340	336 – 352
Rated Hydraulic Flow	21 – 26 gpm	33 – 40 gpm	33 – 40 gpm	47 – 58 gpm	47 – 58 gpm	50 – 68 gpm	66 – 79 gpm
Operating Pressure	2,320 psi	2,610 psi	2,610 psi	2,610 psi	2,610 psi	2,610 psi	2,610 psi
Blows Per Minute	450 – 650	450 – 800	400 – 800	350 – 700	250 – 550	200 – 450	200 – 400
Weight	2,776 lbs	2,928 lbs	3,927 lbs	5,471 lbs	6,763 lbs	6,810 lbs	8,638 lbs
Ziegler Model	H110GC	H115GC	H120GC	H130GC	H140GC	H160GC	H180GC



Cat Compactor Plate

Compactor Plates

MODEL	CVP75	CVP110
Manufacturer	Caterpillar	Caterpillar
Machine Size	311 – 316	320 – 336
Rated Flow	28 – 32 gpm	38 – 42 gpm
Operating Pressure	2,000 – 2,500 psi	2,000 – 2,500 psi
Plate Width	29"	34"
Plate Length	43"	47"
Weight	2,454 lbs	3,338 lbs
Ziegler Model	CVP75	CVP110



Mulchers

MODEL	HM3013	HM4815	HM5515
Manufacturer	Caterpillar	Caterpillar	Caterpillar
Machine Size	313 – 317	320 – 323	326 – 336
Rated Flow	32 – 53 gpm	40 – 53 gpm	34 – 79 gpm
Operating Hydraulic Pressure	3,000 – 5,000 psi	3,000 – 5,000 psi	3,500 – 5,000 psi
Height	39"	38"	38"
Working Width	53"	62"	62"
Weight	2,920 lbs	4,036 lbs	5,201 lbs
Ziegler Model	HM3013	HM4815	HM5515
Case Drain Parts (if not on machine)	\$3,000	\$3,000	\$3,000
Install (if not on machine)	\$3,000	\$3,000	\$3,000

Multi Processors

MODEL	MP318	CONCRETE JAW	DEMOLITION JAW	PULVERIZER JAW	SHEAR JAW	UNIVERSAL JAW
Machine Size	320 – 326					
Rated Flow	40 gpm					
Cycle Time Open/Close	1.6 / 1.0 seconds					
Primary Crushing Force	295 Sh Ton					
Jaw Opening	26.9"					
Weight	3,218 lbs	1,592 lbs	1,605 lbs	1,876 lbs	1,466 lbs	1,883 lbs

Multi Processors (cont.)

MODEL	MP324	CONCRETE JAW	DEMOLITION JAW	PULVERIZER JAW	SHEAR JAW	TANK SHEAR JAW	UNIVERSAL JAW
Machine Size	326 – 336						
Rated Flow	59 gpm						
Cycle Time Open/Close	1.8 / 1.2 seconds						
Primary Crushing Force	406 Sh Ton						
Jaw Opening	32.5"						
Weight	4,062 lbs	2,295 lbs	2,346 lbs	2,573 lbs	2,094 lbs	2,498 lbs	2,674 lbs

Multi Processors (cont.)

MODEL	MP332	CONCRETE JAW	DEMOLITION JAW	PULVERIZER JAW	SHEAR JAW	UNIVERSAL JAW
Machine Size	330 – 352					
Rated Flow	74 gpm					
Cycle Time Open/Close	1.9 / 1.3 seconds					
Primary Crushing Force	479 Sh Ton					
Jaw Opening	36.5"					
Weight	5,000 lbs	3,408 lbs	3,686 lbs	3,726 lbs	3,331 lbs	4,458 lbs

Multi Processors (cont.)

MODEL	MP345	CONCRETE JAW	DEMOLITION JAW	PULVERIZER JAW	SHEAR JAW
Machine Size	349 – 374				
Rated Flow	95 gpm				
Cycle Time Open/Close	1.9 / 1.3 seconds				
Primary Crushing Force	573 Sh Ton				
Jaw Opening	40.3"				
Weight	6,287 lbs	4,985 lbs	5,454 lbs	5,562 lbs	4,996 lbs

Multi Processors (cont.)

MODEL	MP365	CONCRETE JAW	DEMOLITION JAW	PULVERIZER JAW	SHEAR JAW
Machine Size	374 – 395				
Rated Flow	119 gpm				
Cycle Time Open/Close	2.1 / 1.6 seconds				
Primary Crushing Force	665 Sh Ton				
Jaw Opening	48.5"				
Weight	8,223 lbs	6,371 lbs	7,403 lbs	7,456 lbs	6,806 lbs

Pins

LINKAGE	312	316	B	CB	DB	TB	VB2	HB2
Manufacturer	Caterpillar	Ziegler	Ziegler	Ziegler	Ziegler	Ziegler	Ziegler	Ziegler

Excavator Linkages

LEGACY MACHINES	NEXT GEN MACHINES	LINKAGE	STICK PIN (A) (MM)	LINK PIN (B) (MM)	FACE SPREAD (E) (MM)	PIN SPREAD (C) (MM)
300.9D		<1T	25	25	100	86.3
301.4C/301.5/301.6C/301.7D/301.7D CR/301.8/301.8C	301.5/301.6/301.7 CR /301.8/302 CR	1–2T	30	30	105	126.6
302.2D/302.4D/302.5C/302.5/302.7D	302.7	2–3T	35	35	135	165
303C CR/303E CR/303.5C CR/303.5D CR/303.5E CR/303.5E2 /304D CR/304E CR/304E2/304.5E2	303 CR/303.5 CR/304	3–5T	40	40	136	200
304C CR/305C CR/305D CR/305E CR/305E2/305.5D CR/305.5E CR /305.5E2/306E2	305 CR/305.5 CR/306 /306.5/306.6CR SB	5–7T	45	45	156	260.5
307D/307E/307E2/308D/308E CR/308E2	307.5/308/309 CR	7–10T	50	50	201	305.9
	310	10T	65	65	214	428
311D/311F/312D/312D2/312E/312F/313D2/313F/314D/314E/314F/315F	313/313 GC/315/315 GC	312	65	65	221	407
315D/316E/316F/318D2/318E/318F	317/317 GC	316	70	70	281	463
319D/320D/320E/321D/323E/323F/325F	320/320GC/323/325	B	80	80	311	445
324D/324E/326D2/326F/328D/329D/329D2/329E/329F /330D2/330F/335F	326/330/330 GC/335	CB	90	90	351	485
336D/336D2/336E/336F/340D2/340F	336/336 GC/340	DB	100	90	386	500
345D/349D/349D2/349E/349F/352F	349/350/352	TB	110	100	441	587
374D/374F	374	VB2	120	110	501	635
390D/390F	395	HB2	130	120	551	650



Cat Cribbing Bucket

Rear Dig Buckets

MACHINE	415 – 440					
Style	Cribbing	HD	HD	Soil	Soil	Soil
Manufacturer	Caterpillar	Caterpillar	Caterpillar	Caterpillar	Caterpillar	Caterpillar
Width	8"	12"	16"	18"	24"	30"
Capacity	1.4 cu ft	2.8 cu ft	3.7 cu ft	6.4 cu ft	8.5 cu ft	11.3 cu ft
Weight	288 lbs	238 lbs	280 lbs	336 lbs	395 lbs	434 lbs
Ziegler Model	BKBHL8CRIB	BKBHL12HD	BKBHL16HD	BKBHL18SO	BKBHL24SO	BKBHL30SO



Cat Heavy Duty Bucket

Rear Dig Buckets (cont.)

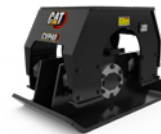
MACHINE	415 – 440	450				
Style	Soil	HD	HD	HD	HD	HD
Manufacturer	Caterpillar	Caterpillar	Caterpillar	Caterpillar	Caterpillar	Caterpillar
Width	36"	18"	24"	30"	36"	42"
Capacity	13.4 cu ft	6.4 cu ft	9.5 cu ft	12.4 cu ft	15.9 cu ft	19.2 cu ft
Weight	491 lbs	447 lbs	495 lbs	567 lbs	663 lbs	745 lbs
Ziegler Model	BKBHL36SO	BK45018HD	BK45024HD	BK45030HD	BK45036HD	BK45042HD



Cat Manual Rear Coupler

Rear Couplers

MACHINE	415 – 440		450
Style	Manual	Hydraulic	Hydraulic
Manufacturer	Caterpillar	Caterpillar	Caterpillar
Weight	192 lbs	192 lbs	333 lbs
Ziegler Model	CPLBHLMAN	CPLBHLHYD	CPL450HYD



Cat Compactor Plate

Compactor Plates

MODEL	CVP40
Manufacturer	Caterpillar
Machine Size	415 – 450
Rated Hydraulic Flow	18 – 22 gpm
Operating Pressure	1,800 – 2,200 psi
Plate Width	23"
Plate Length	38"
Weight	770 lbs
Ziegler Model	CVP40



Cat Thumb

Thumbs

MACHINE	415 – 430	415 – 440
Style	Stiff Link	Hydraulic
Manufacturer	Caterpillar	Caterpillar
Weight	249 – 329 lbs	272 – 351 lbs
Ziegler Model	THBBHLSTIF	THBBHLHYD

Pins

LINKAGE	415 – 440	450
Manufacturer	Caterpillar	Caterpillar



Cat Hammer

Hammers

MODEL	B8	B8S	B9	B9S	H95S
Manufacturer	Caterpillar	Caterpillar	Caterpillar	Caterpillar	Caterpillar
Machine Size	415 – 440	415 – 440	415 – 450	415 – 450	415 – 450
Rated Hydraulic Flow	13 – 24 gpm	13 – 24 gpm	16 – 26 gpm	16 – 26 gpm	18 – 40 gpm
Operating Pressure	1,378 psi	1,378 psi	1,846 psi	1,846 psi	2,500 psi
Blows Per Minute	400 – 800	400 – 800	400 – 800	400 – 800	700 – 1,260
Weight	850 lbs	865 lbs	1,368 lbs	1,345 lbs	1,389 lbs
Ziegler Model	B8	B8S	B9	B9S	H95S



Cat Fork

Forks

MACHINE	415 – 450		
Manufacturer	Caterpillar	Caterpillar	Caterpillar
Style	Pallet Fork	Pallet Fork	Pallet Fork
Tine Length	42"	48"	54"
Carriage Width	60"	60"	60"
Coupler Style	IT	IT	IT
Weight	985 lbs	1,021 lbs	1,053 lbs
Ziegler Model	FKBHLIT42	FKBHLIT48	FKBHLIT54

WITH MUCH MORE TO OFFER. CALL FOR PRICING AND INFORMATION.



CAT GRAPPLE BUCKETS



DYMAX PUSHOUT BUCKETS



CAT ROLL OUT (HIGH DUMP) BUCKETS



CAT ORANGE PEEL GRAPPLES



CAT CONTRACTOR GRAPPLES



CAT DEMO AND SORTING (ROTATING) GRAPPLES



CAT SHEARS



CAT SECONDARY PULVERIZERS



CAT DRUM CUTTERS



CAT TILTROTATOR COUPLERS



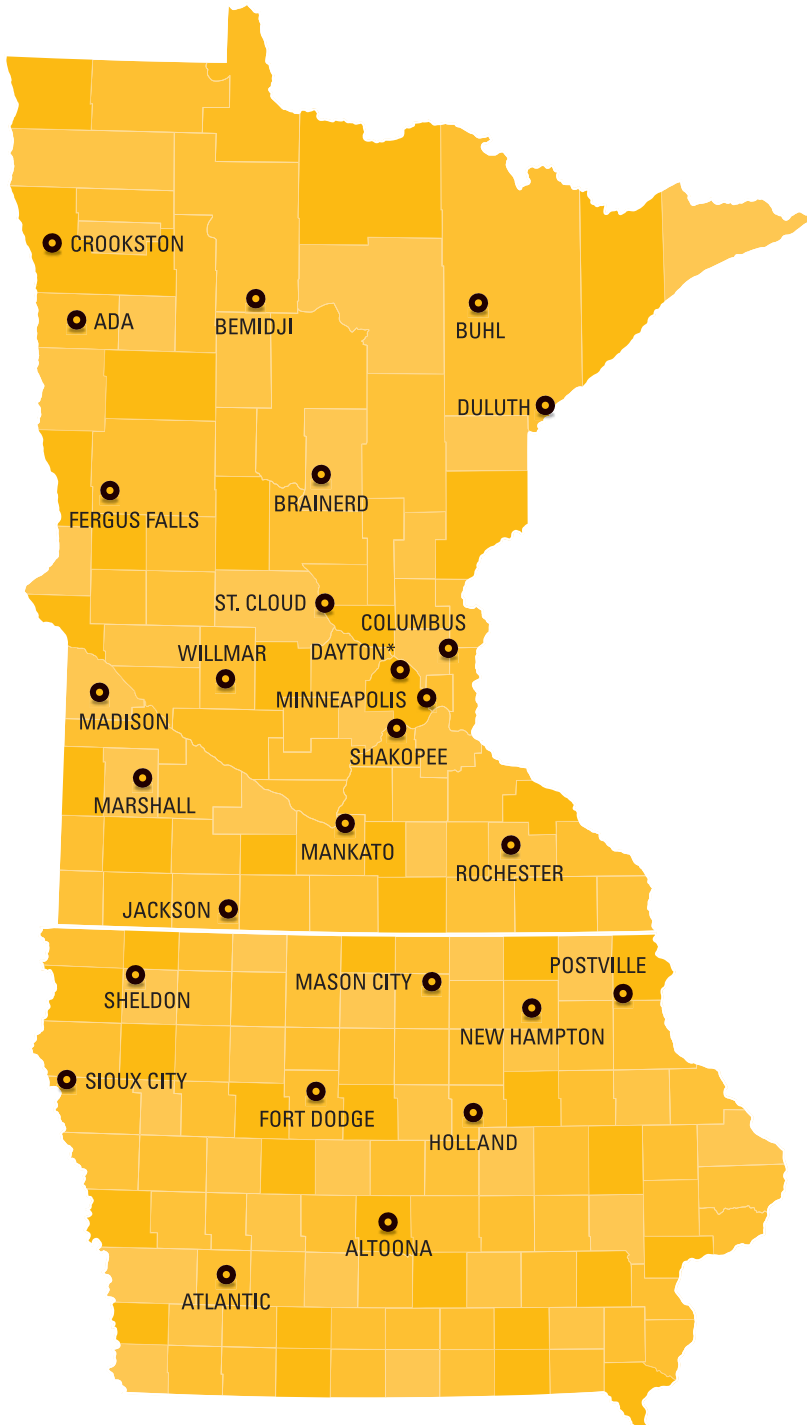
DYMAX HYDRAULICALLY ADJUSTABLE FORKS



KENCO SLAB CRAB



CAT MULTI-PROCESSORS AND INTERCHANGEABLE JAWS



*Rental Store only

MINNESOTA

Ada

2099 State Highway 9
56510 ZIP / 218.784.2961

Bemidji

5426 Highway 71 N
56601 ZIP / 218.751.1033

Brainerd

3311 Liberty Lane
56401 ZIP / 218.829.9800

Buhl

10081 E Highway 169
55713 ZIP / 218.258.3232

Columbus

13822 W Freeway Drive
55038 ZIP / 651.982.5600

Crookston

720 3rd Avenue SW
56716 ZIP / 218.281.4245

Dayton*

18171 Territorial Road
55369 ZIP / 763.428.0730

Duluth

210 Garfield Avenue
55802 ZIP / 218.722.6628

Fergus Falls

3502 State Highway 210 W
56537 ZIP / 218.736.2680

Jackson

191 Industrial Parkway
56143 ZIP / 507.847.7600

Madison

2488 Highway 75 N
56256 ZIP / 320.598.3150

Mankato

2145 Howard Drive W
56003 ZIP / 507.388.1444

Marshall

1200 N Highway 59
56258 ZIP / 507.532.4403

Minneapolis

901 W 94th Street
55420 ZIP / 952.888.4121

Rochester

6340 Highway 63 S
55904 ZIP / 507.285.1775

Shakopee

8000 County Road 101 E
55379 ZIP / 952.887.4570

St. Cloud

2225 25th Street
56301 ZIP / 320.253.2234

Willmar

4600 Highway 71 S
56201 ZIP / 320.235.8123

IOWA

Altoona

1500 Ziegler Drive NW
50009 ZIP / 515.957.3828

Atlantic

951 Park Drive
50022 ZIP / 712.243.1039

Fort Dodge

3366 5th Avenue S
50501 ZIP / 515.576.3161

Holland

17075 Market Avenue
50642 ZIP / 319.824.8702

Mason City

11490 265th Street
50401 ZIP / 641.423.7240

New Hampton

1819 McCloud Avenue
50659 ZIP / 641.394.4226

Postville

308 North Lawler
52162 ZIP / 563.864.7461

Sheldon

102 Crossroads Drive
51201 ZIP / 712.324.5604

Sioux City

5300 Harbor Drive
51111 ZIP / 712.252.4401

