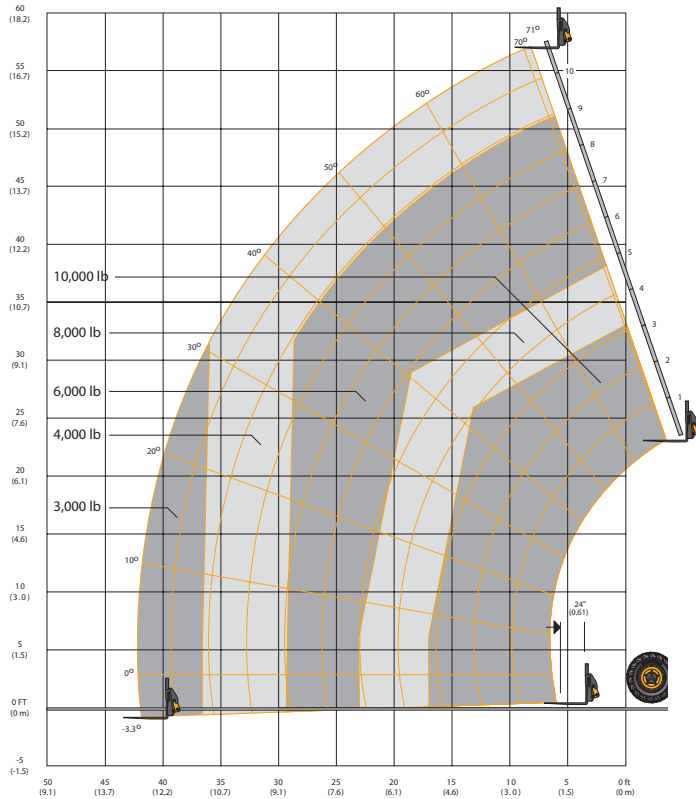
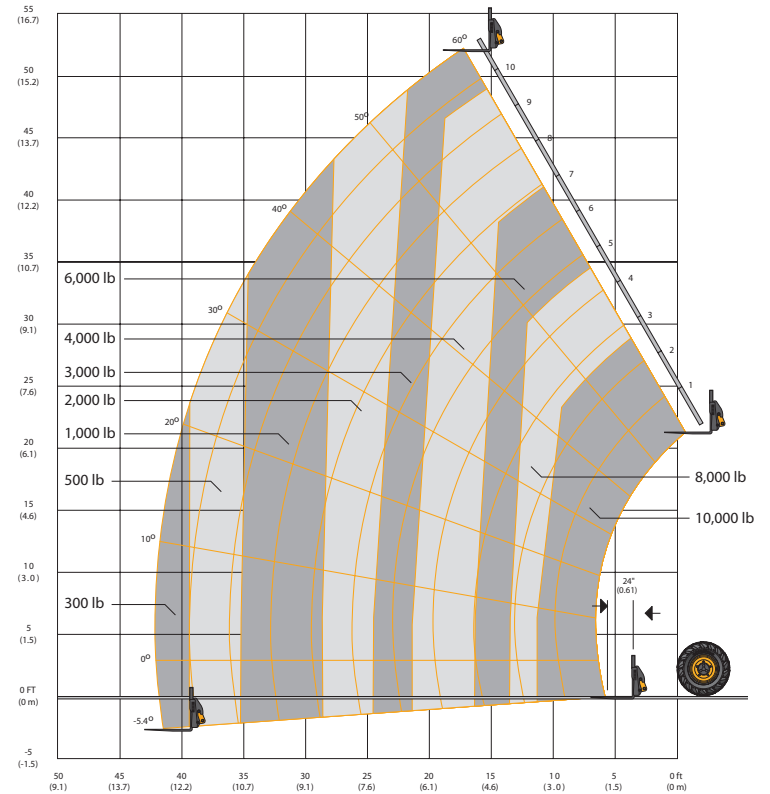




LIFT PERFORMANCE – STABILIZERS EXTENDED / 510-56



LIFT PERFORMANCE – STABILIZERS RETRACTED / 510-56



These load charts are for the rated capacity of the machine with 66" wide standard carriage and 48" pallet forks. Use only JCB approved attachments and check the relevant load chart for the machine model. Complies with ANSI/ITSDF B56.6 Automatic rear axle stabilization (RAS) system.

LIFT PERFORMANCE 510-56

Maximum Capacity	lb (kg)	10,000 (4537)
Lift Capacity to 52 ft (on tires)	lb (kg)	3000 (1361)
Lift Capacity to Full Height (on stabilizers)	lb (kg)	4000 (1814)
Lift Capacity at Full Reach (on tires)	lb (kg)	300 (136)
Lift Capacity at Full Reach (on stabilizers)	lb (kg)	3000 (1360)
Lift Height	ft-in (m)	56 (17.07)
Reach at Maximum Lift Height	ft-in (m)	8-2 (2.49)
Maximum Forward Reach	ft-in (m)	42 (12.80)
Frame Sway Left or Right	degrees	10