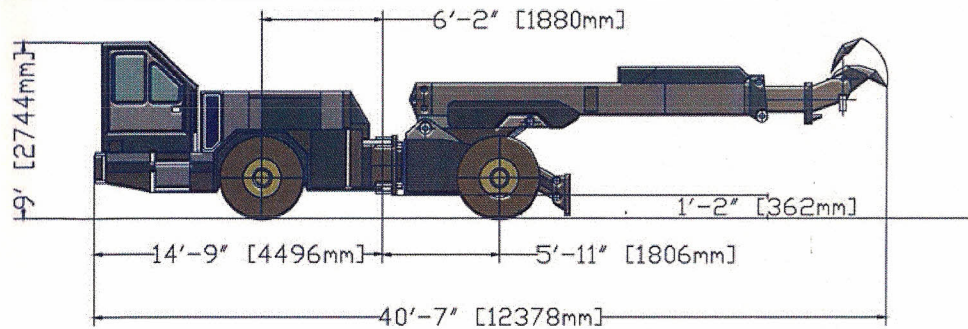
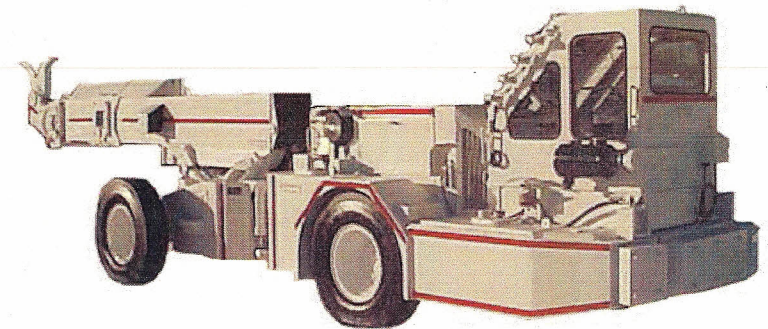
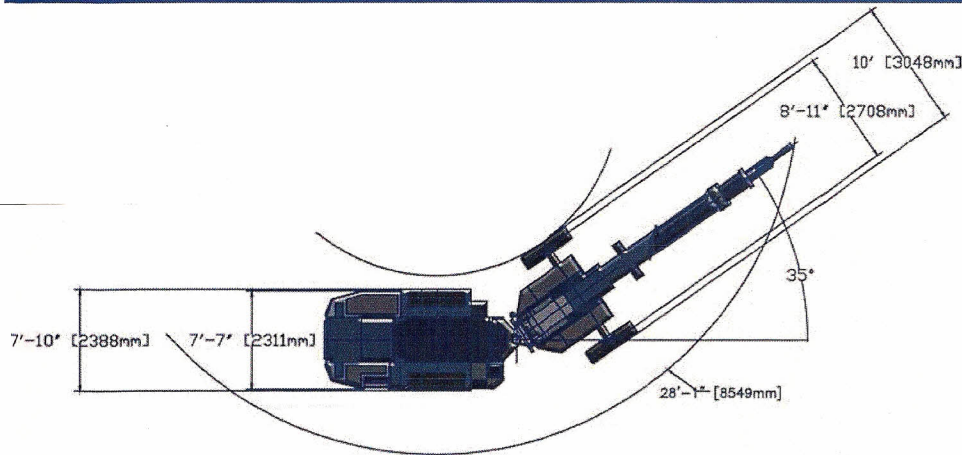


**SV-26 SCALER**

**GENERAL DIMENSIONS**



**TURNING RADIUS**



**OLDENBURG**

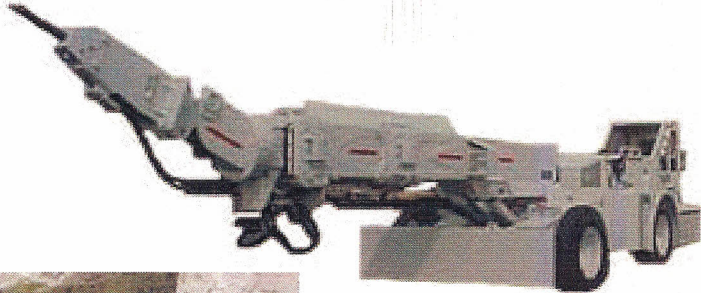
**IT'S YOUR MINE**

We don't want you to buy *our* equipment. We want you to buy *your* equipment from us.  
We want to build *your* equipment. After all, it's your mine. B-SV26-S-01

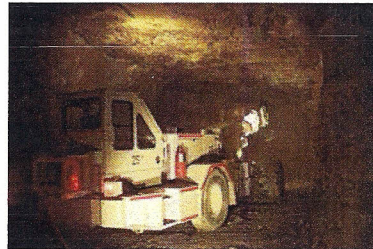
**SV-26 SCALER**

**TOUGH, SOLID AND PRODUCTIVE SCALER**

Our industry-leading scalers are built for today's requirements: high productivity, cost efficiency, and day after day reliability. You know what you need for your mine and **we want to fulfill your needs** with quality products and excellent technical support.



Our SV-26 Scaler is designed and built to provide years of reliable and trouble-free service. Companies all over the world depend on its high-quality construction and proven servicability to make their mines as productive as they can be.



The operation, maintenance and troubleshooting are very simple due to **all the major components' placement for easy access.**

**Operator's Cab**

The SV-26 Scaler features a rear-mounted, enclosed ROPS/FOPS cab. Additional FOPS protection is afforded by the Lexguard windshield. A comfortable captain's seat incorporates twin joysticks that control all positioning/scaling functions. Sound suppression to 84 dB and standard air conditioning/heater provide a safe and comfortable working environment.



**Boom**

The SV-26 includes a retractable boom with a 36.5-foot reach. The super-duty design features wear-resistant steel and up to 400% more roller contact patch for superior durability. Easy maintenance is afforded by external greasing points as well as not needing to remove the inner boom for component access. Heavy-duty Rotek bearing and seals provide 180-degree rotation and are designed specifically for reliable scaling. Triangular rock deflector on upper assembly is standard.

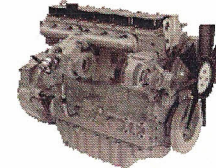


**SCALING SYSTEM OPTIONS**

Standard: Oldenburg Scaling Pick  
Optional: Okada Model 305 Hammer



**Drivetrain:** Choice of Caterpillar, Cummins, Mercedes-Benz, Deutz or any other customer-preferred Diesel engine.



**Transmission and Axles:** 4 speed Powershift transmission, 4 wheel drive. Hydraulic wet-disc braking system, spring-loaded parking/emergency brake. Gradeability: 35%. Max. Speed: 13 MPH. John Deere TM 1200 axles standard.



**Hydraulic System:** Durable piston pump for scaling and boom operations. Integrated compact manifolds for better packaging and ease of maintenance. Premium abrasion-resistant hoses standard.

**Fire Suppression:** Standard system includes in-cab fire extinguisher and manually-actuated ANSUL exterior fire-suppression system. Optional is an electronic ANSUL system.



- Optional Scaler Features:**
- 1. Spare Wheel and Tire
  - 2. Wiggins Fueling System
  - 3. 10'-wide Pusher Blade.
  - 4. Central greasing system

## Scaler Specification

<b>Boom</b>	<b>SV26</b>	<b>SV22</b>	<b>SV18</b>
Boom Extension	12'-0" (3.6m)	9'8" (2.9m)	7'-10.5" (2.4m)
Max Scale Height	36'-5" (11.1m)	33'-1" (10.1m)	29'-11" (9.1m)
Boom Swing Angle	30° by Articulation	30° by Articulation	30° by Articulation
Min Pick Height	4'-2" (1.3m)	4'-5" (1.4m)	4'-8" (1.4m)

<b>Carrier</b>	<b>SV26</b>	<b>SV22</b>	<b>SV18</b>
Maximum Width	10'-0" (3.0m)	8'-6" (2.6m)	8'-6" (2.6m)
Inside Turning Radius	17'-7" (5.4m)	18'-4" (5.6m)	18'-4" (5.6m)
Outside Turning Radius	30'-4" (9.3m)	28'8" (8.7m)	27'-6" (8.4m)
Overall Length (Boom Retracted)	44'-0" (13.4m)	41'-9" (12.7m)	40'-0" (12.2m)

<b>Hydraulic System</b>	
System Type	Load Sense System
Pumps	2 x Piston Pumps
Max System Pressure	2500 (172 bar)
Tank Volume	76 gal (287 l)
Hydraulic Oil	ISO 068
Pressure Filtration	10 micron
Oil Temp Meter	Yes (sshutdown)
Oil Filter Plugged Indication	Yes
Low Oil Level Indication	Yes (switch for high, low and shutdown)

<b>Engine &amp; Powertrain</b>	<b>Std - Cummins</b>	<b>Mercedes Option</b>
Model	QSB 4.5	904
Number of Cylinders	4	4
Power	160 (119 kW) hp (@ 2200	174 hp (130 kW) @ 2200rpm
Torque (ft-lbf @ rpm)	459 (622 N-m) @ 1500 rpm	420 (569 N-m) @ 1500 rpm
Emissions	Tier III	Tier III
Alternator	24V--70 Amp	24V--90Amp
Engine Air Cleaner	Dual Element, Dry Air	
Exhaust	Muffler, Cataylic Cleaner	
Murphy Monitoring System	Option	
Safety Shutdown Circuits	High Temp & Low Oil Press	
Transmission	Dana 32,000 Powershift	
Transmission Speed Range	4 Sped to 13 mph	
Axle	John Deere 1200	
Tire Size	12.00 X 24	

# SV26 Specification Cont'

**Chassis**

Steering Articulation	+/- 30 degrees
Four Wheel Drive	Yes
Service Brakes	Wet Disc
Emergency Brakes	SAHR Wet Disc
Fuel Tank Volume	75 gal (287 l)
Fuel Gauge	Yes
Exhaust Catalyser	Optional
Exhaust Muffler	Yes
Lighting	12 Front & 2 Rear Opt - 4 Additional Working Lights
Horn/Back-Up Alarm	Yes
Fire Extinguisher	Yes
Central Lubrication	Option
Machine Weight	57,000 lbs (25,855 kg)
Wheelbase	12'-1" (3.7m)
Min Ground Clearance	1'-0" (0.3m)
Cab Height Options	8' (2.4m), 9' (2.7m), & 10' (3.0m)

**Operator Station**

Standard Operator Station	Enclosed Cab
In-Cab Operating Sound Level	84 dBA
Cab Pressurization	Yes
Certified FOPS	Yes
Certified ROPS	Yes

**Options**

Auto Greasing System	
Fire Suppression	
Spare Tire & Rim	
10' Push Blade	
Amber Strobe Light	
Diesel Particulate Filter	
Wiggins Fast Fuel System	

